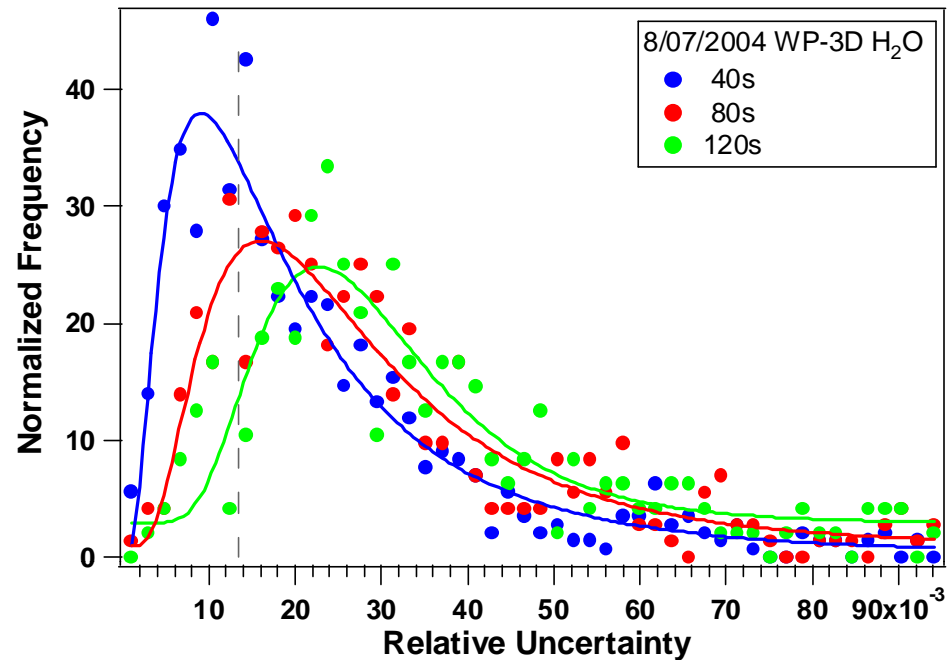
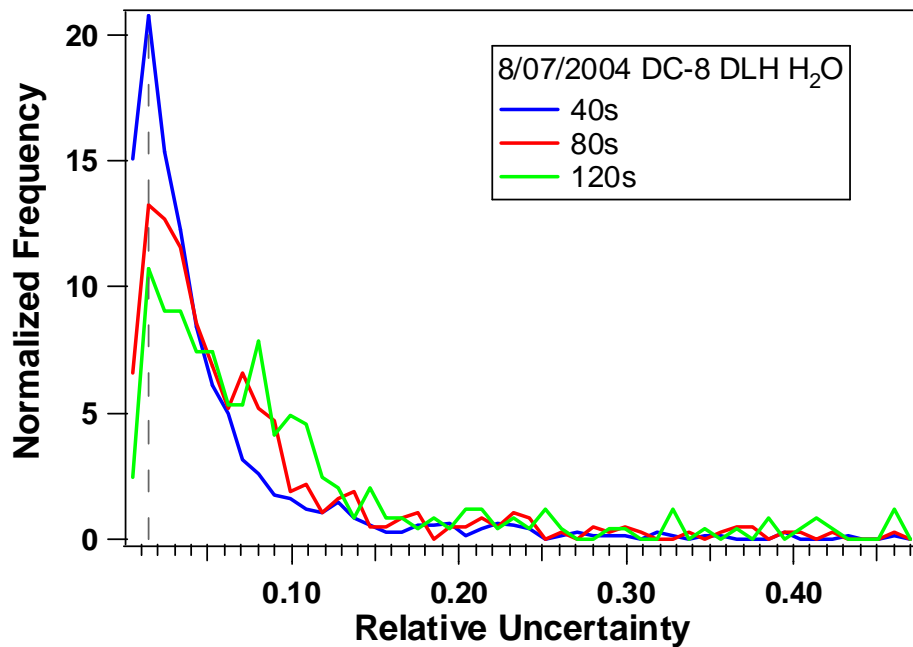


### Estimated H<sub>2</sub>O Absolute Precision

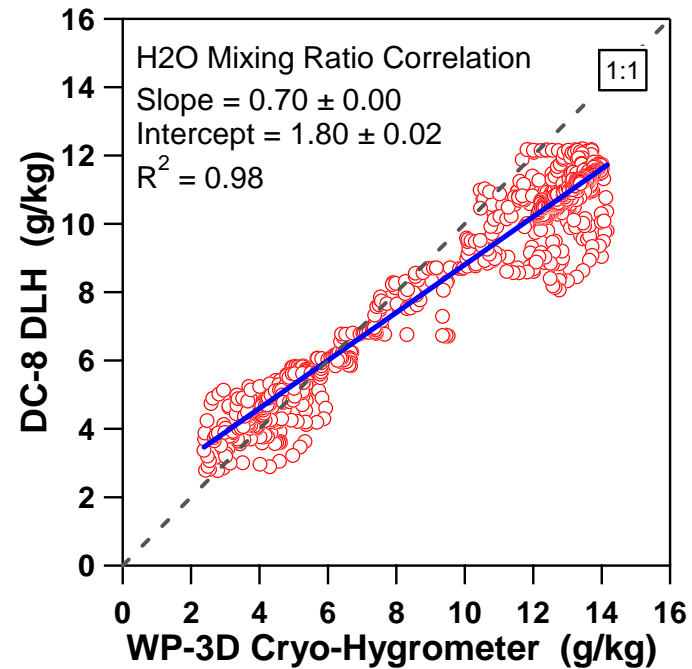
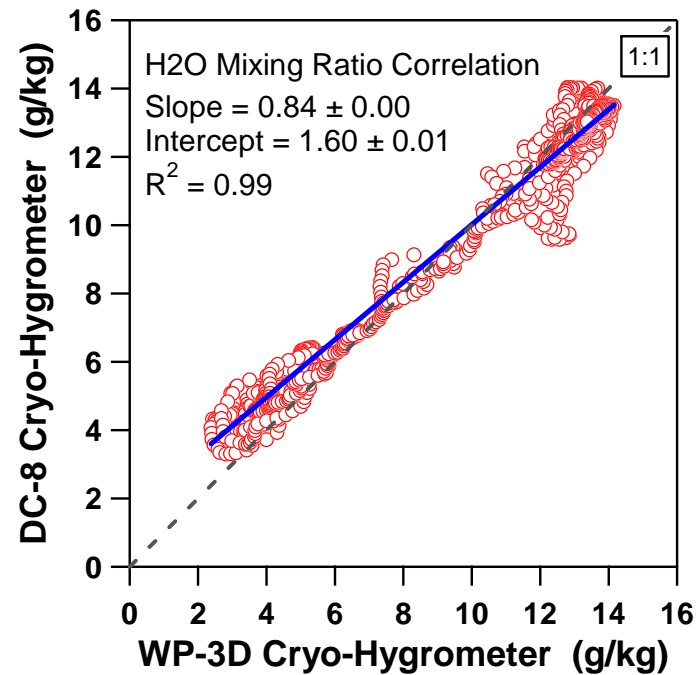
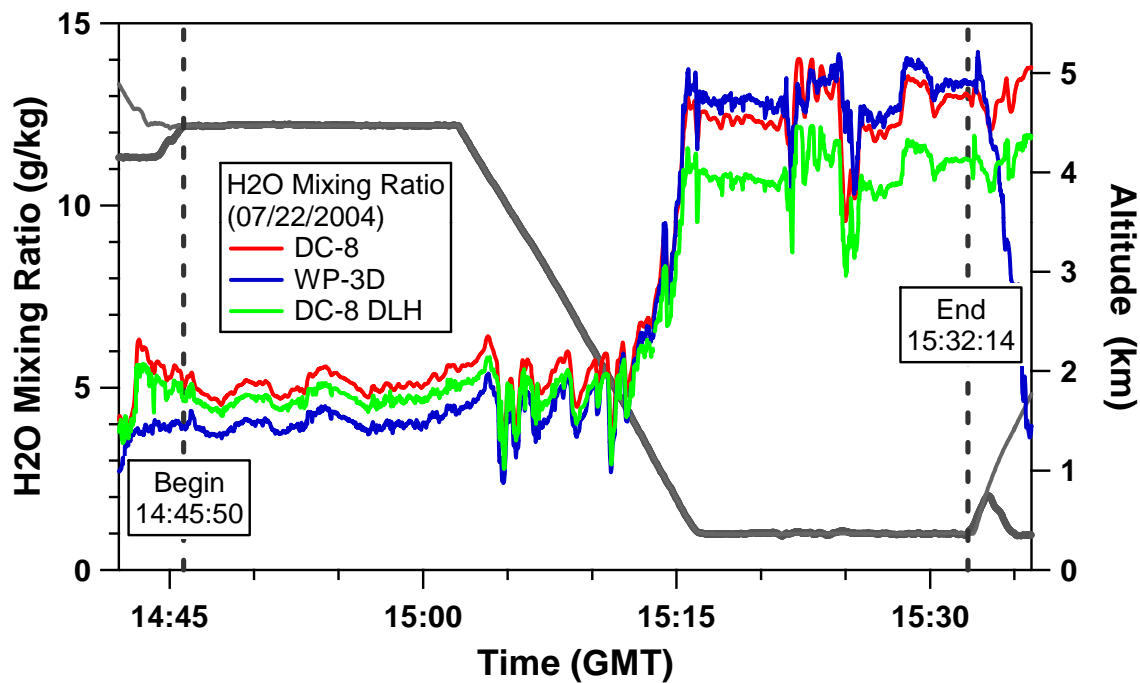
Date	DC-8 (DLH) (g/kg)	DC-8 Project (g/kg)	WP-3D (g/kg)
07/22/2004	0.089	0.0015	~0.10
07/31/2004	0.0018	0.004	~0.10
08/07/2004	0.00023	0.0008	~0.035

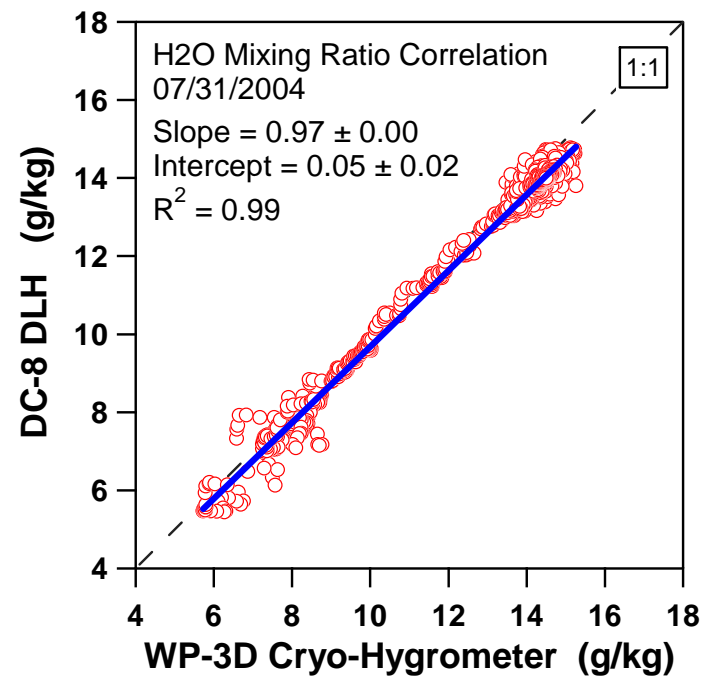
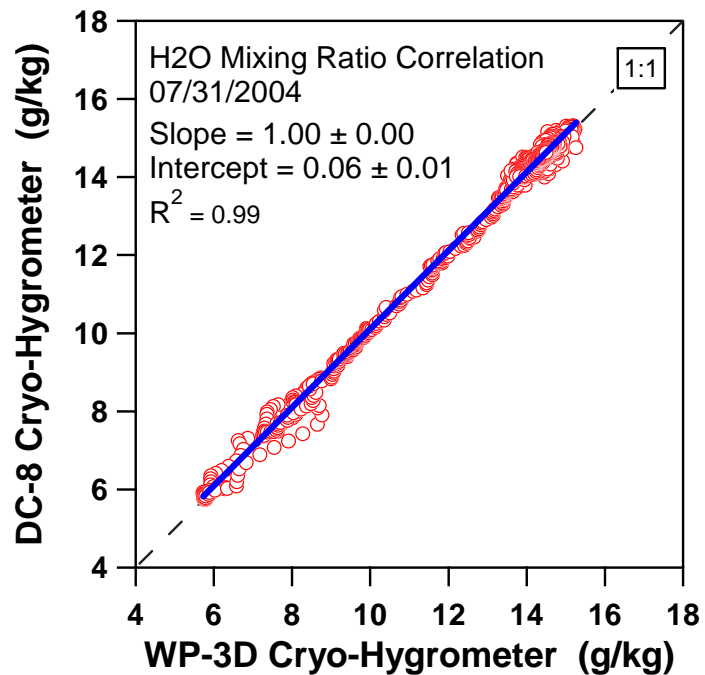


### Estimated H<sub>2</sub>O Relative Precision

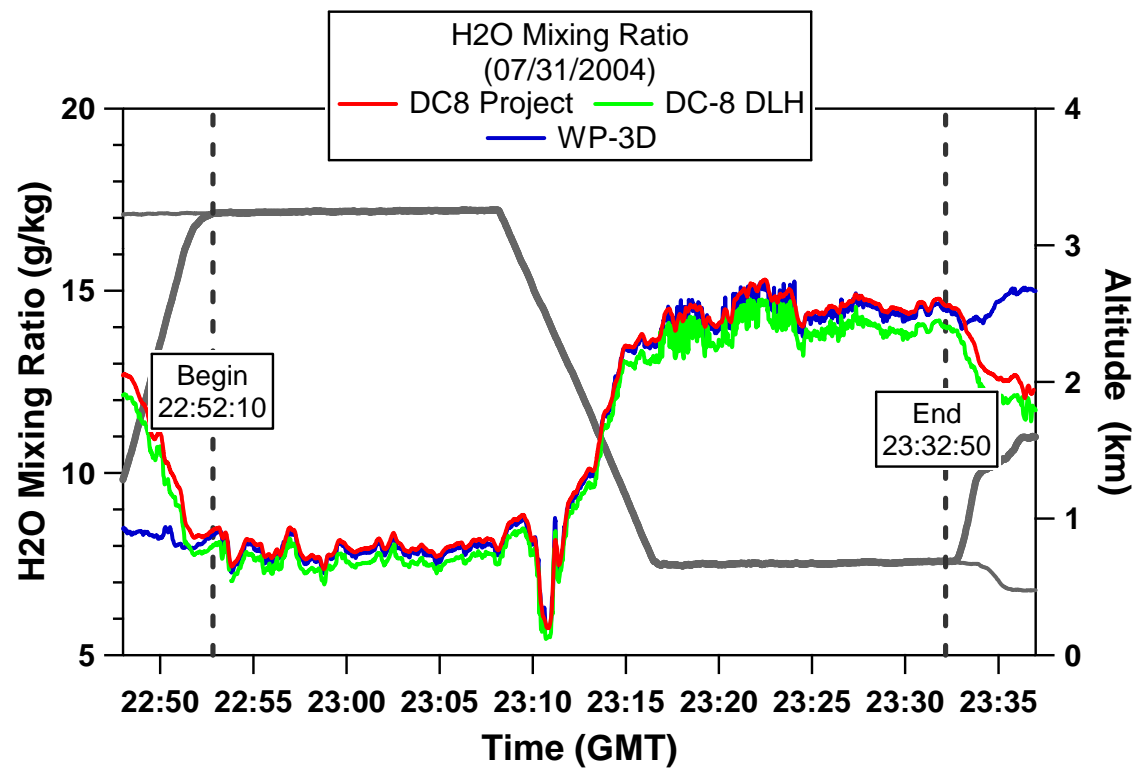
Date	DC-8	DC-8 Project	WP-3D
07/22/2004	1.5%	1.5%	1.2%
07/31/2004	0.9%	0.8%	~0.7%
08/07/2004	1.5%	1.5%	~1.4%

# H<sub>2</sub>O Mixing Ratio Comparison DC-8 vs. WP-3D 07/22/2004

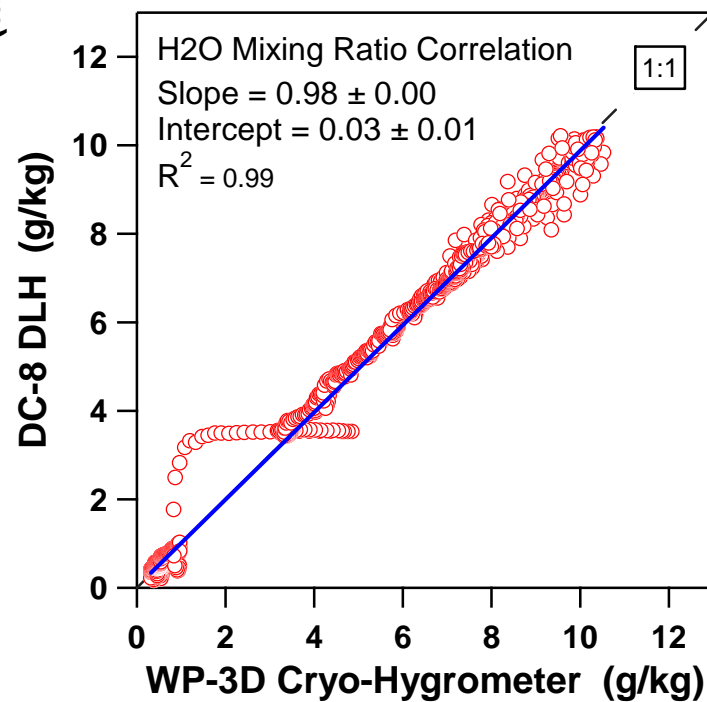
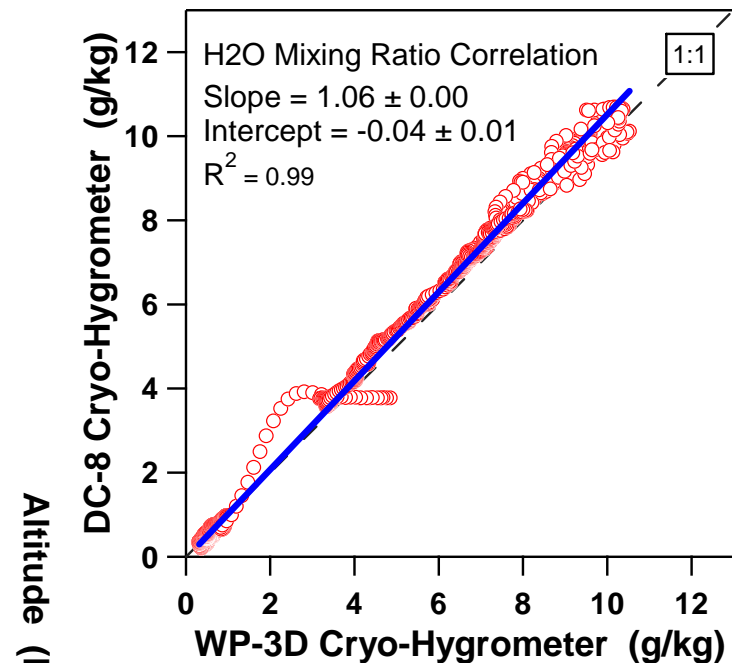
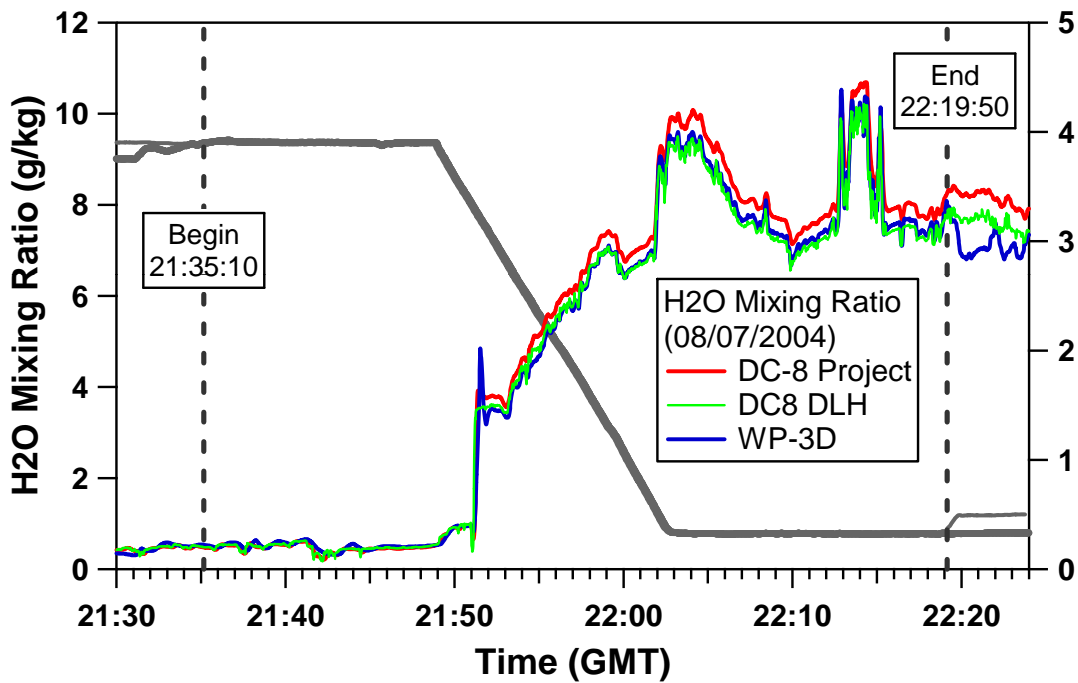




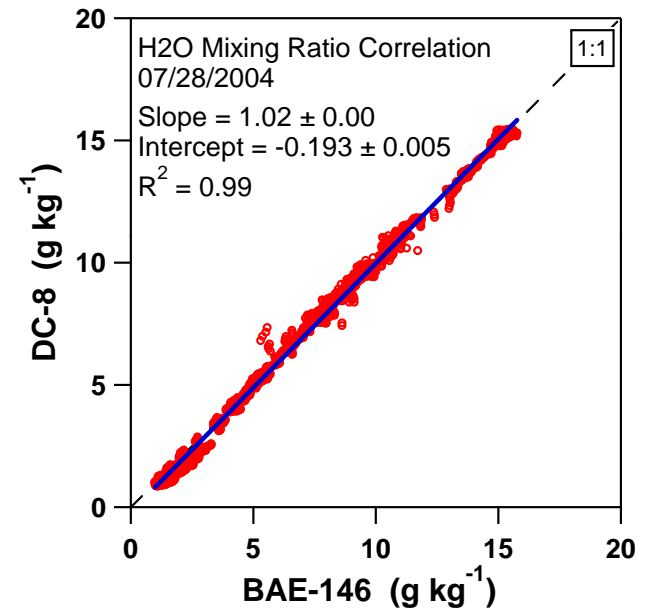
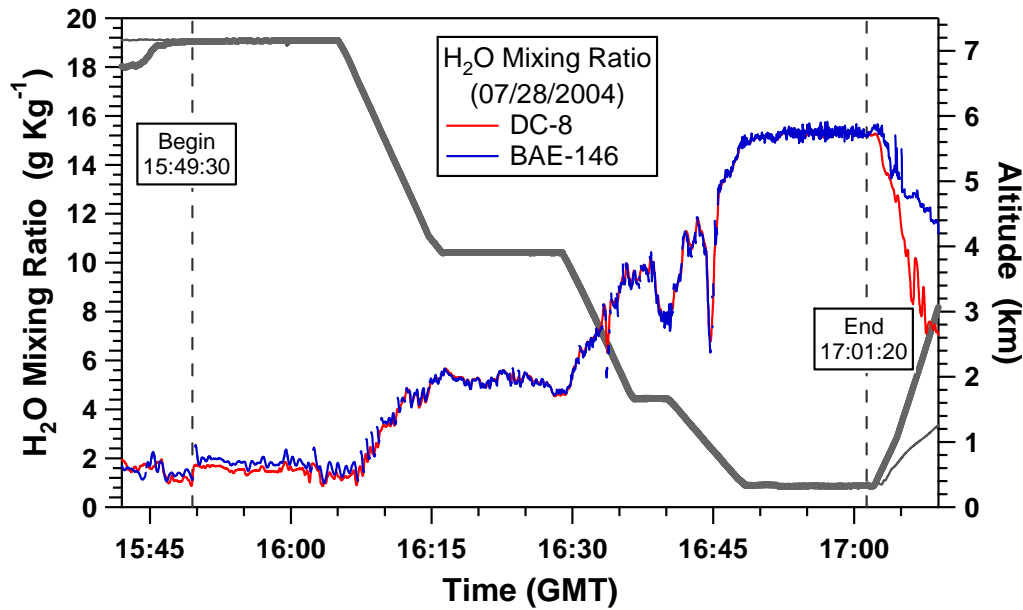
## H<sub>2</sub>O Mixing Ratio Comparison DC-8 vs. WP-3D 07/31/2004



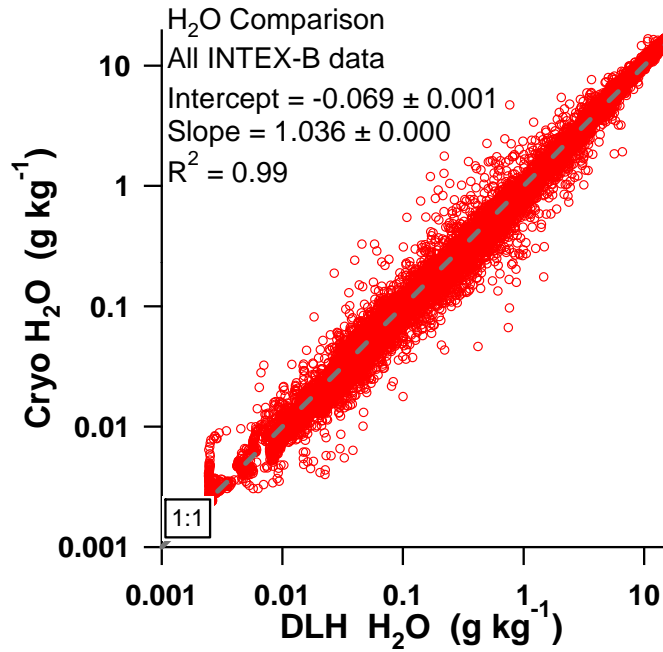
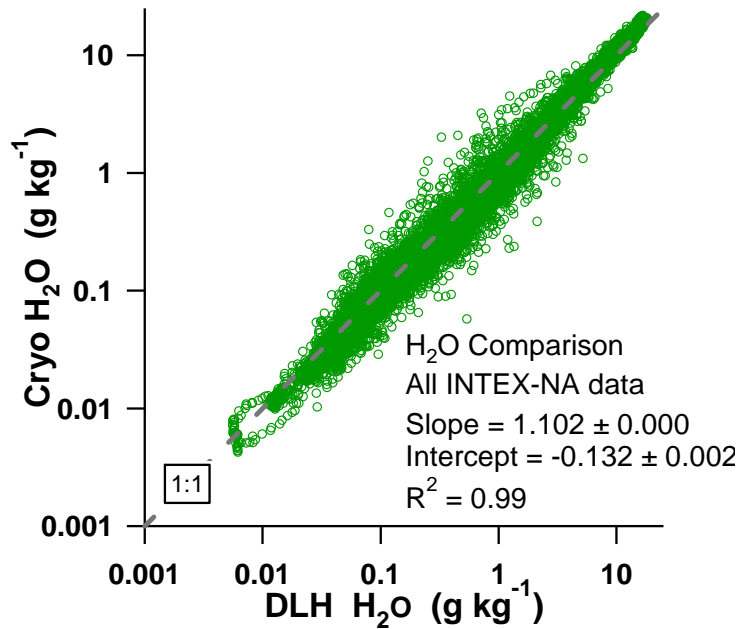
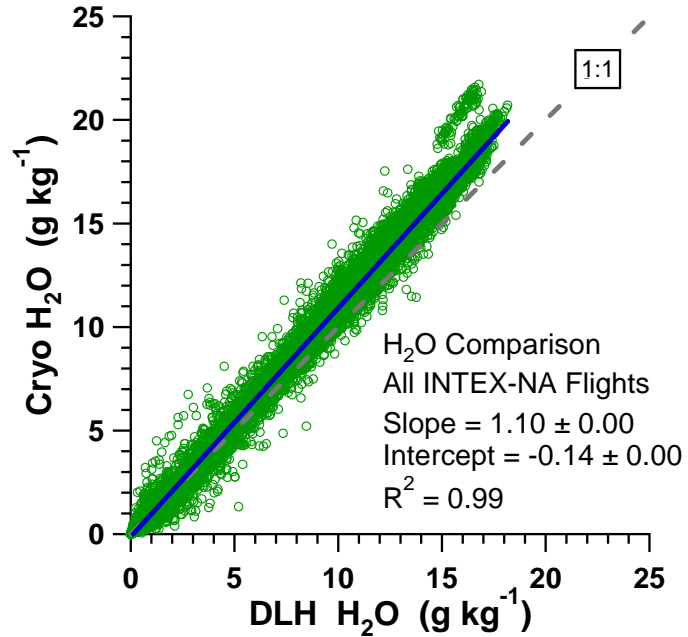
# H<sub>2</sub>O Mixing Ratio Comparison DC-8 vs. WP-3D 08/07/2004



# H<sub>2</sub>O Mixing Ratio Comparison DC-8 vs. Bae-146 07/28/2004



# DC-8 H2O Comparison: Cryo-Hygrometer vs. DLH



## H<sub>2</sub>O mixing ratio comparison between DC-8 and WP-3D

