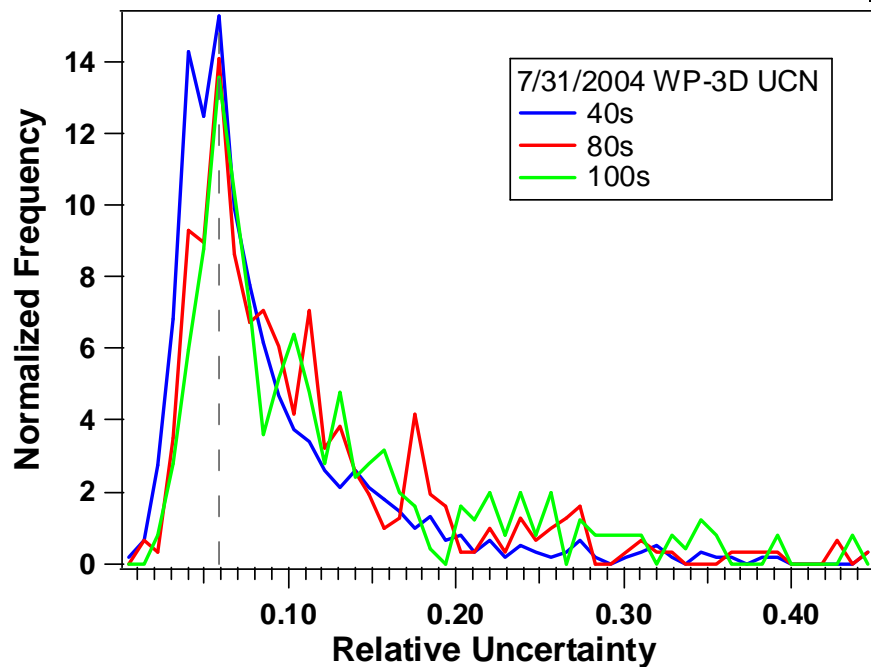


Estimated Particle Density Relative Precision

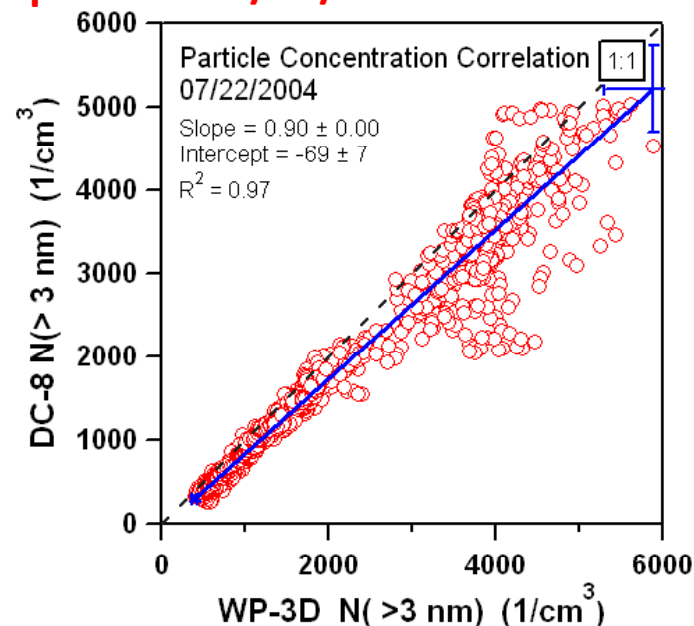
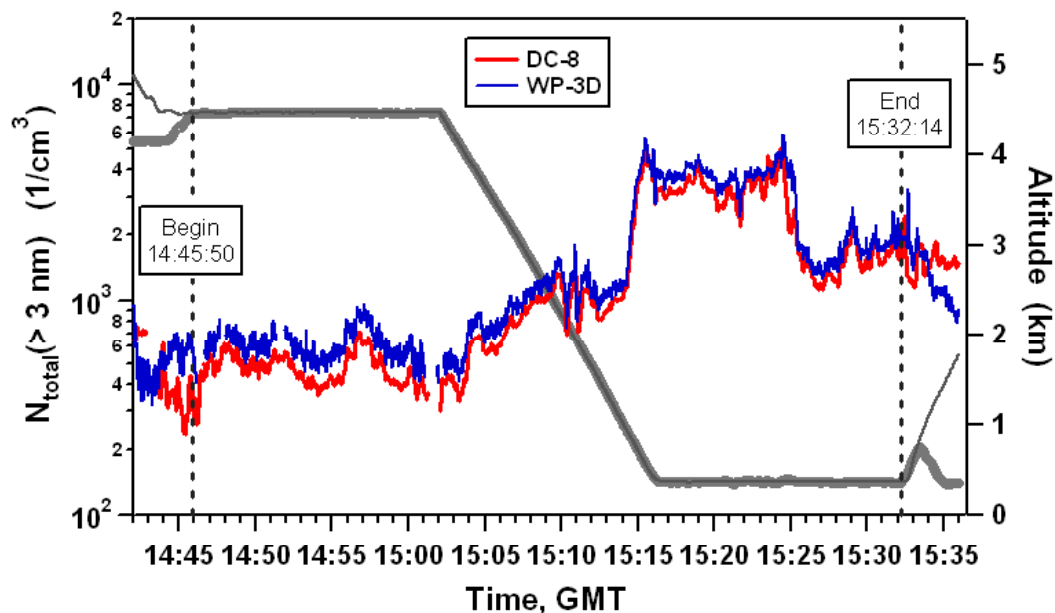
Date	DC-8:N(> 3 nm)	WP-3D:N(> 4 nm)
07/22/2004	3%	6%
07/31/2004	4%	6%
08/07/2004	8%	8%



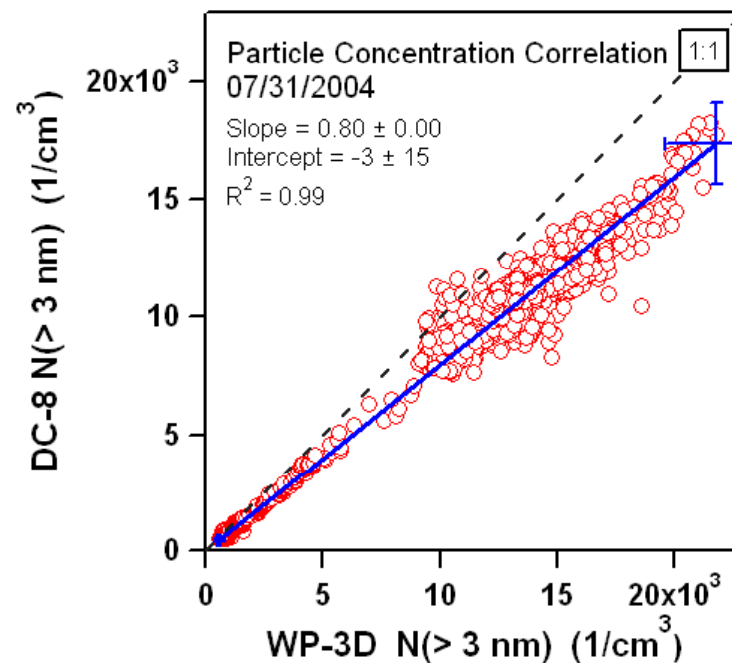
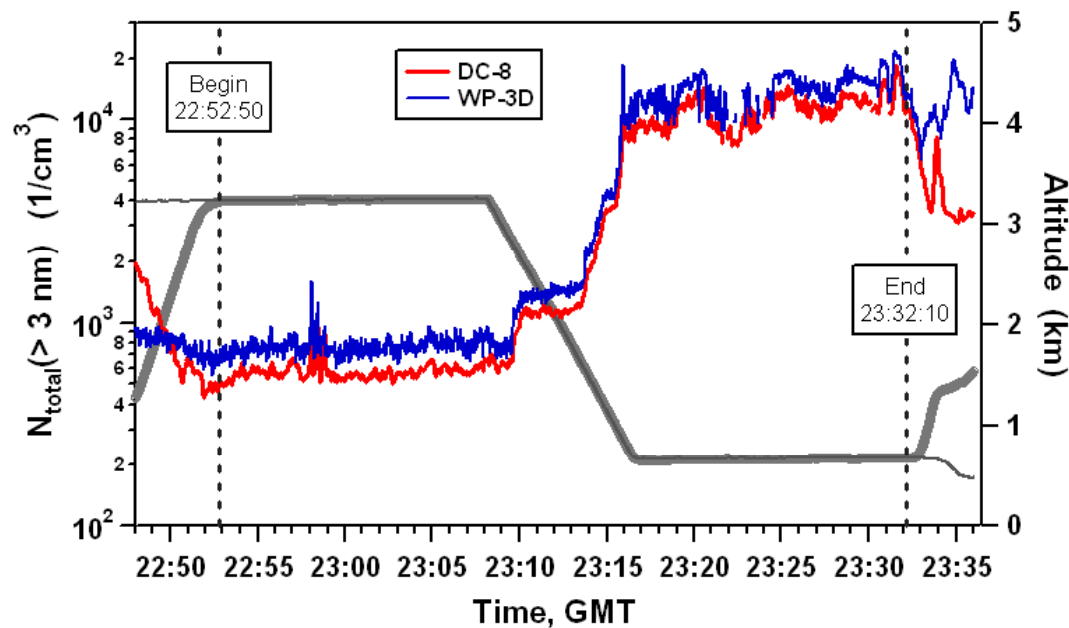
PI Reported Uncertainty

DC-8: 10%
WP-3D: ~10%

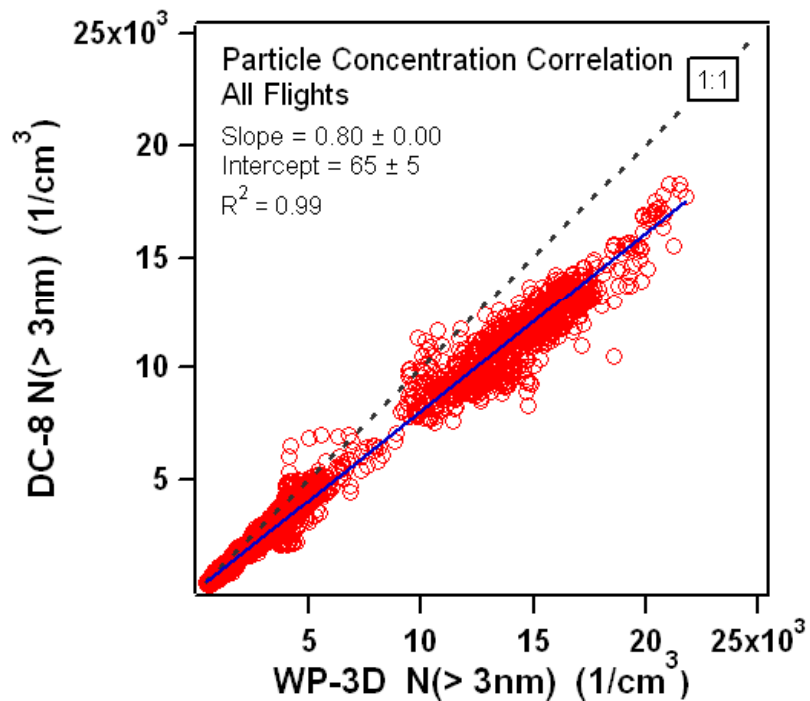
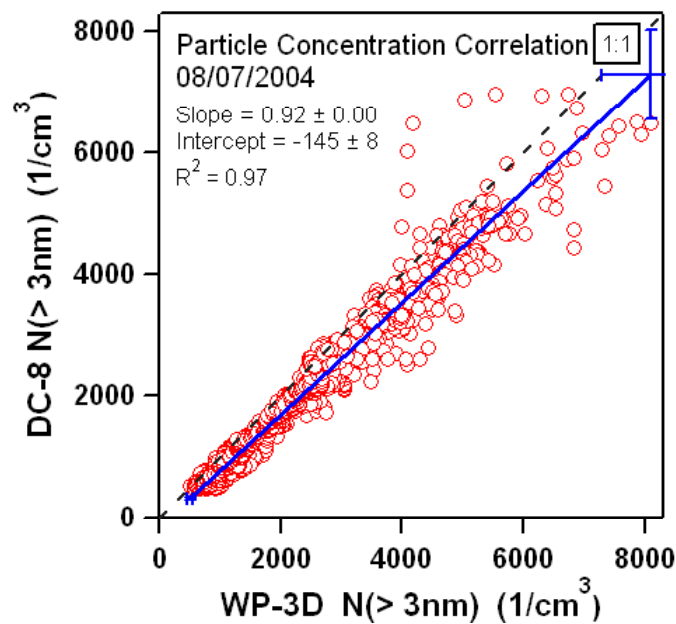
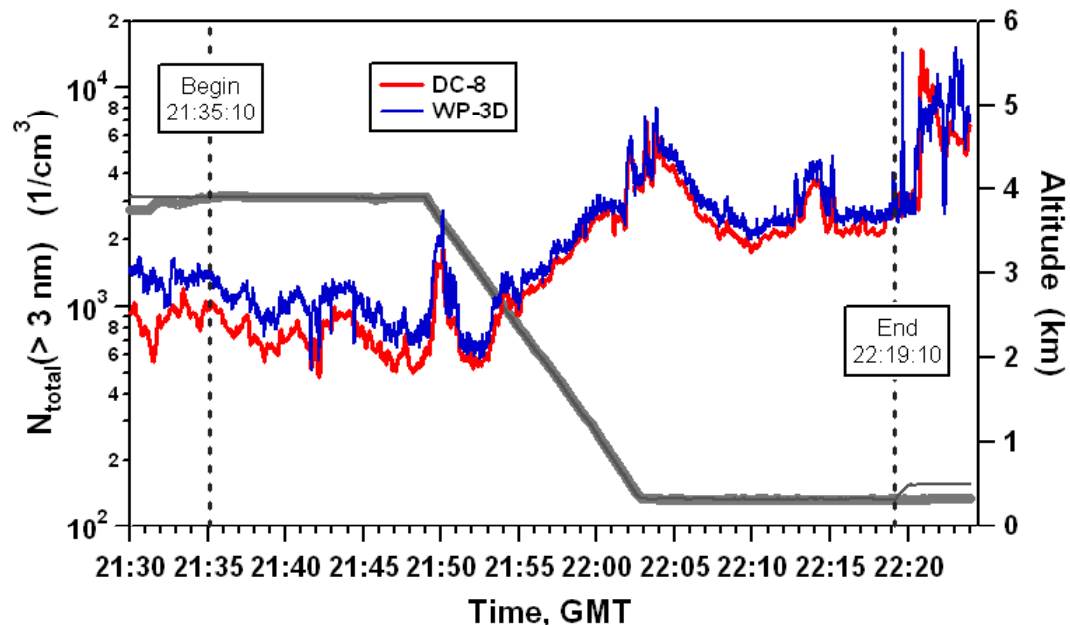
Particle Density Measurement Comparison: 07/22/2004



Particle Density Measurement Comparison: 07/31/2004



Particle Density Measurement Comparison: 08/07/2004



Projected Particle Density Measurement Difference

DC-8	WP-3D
500	544
1000	1169
2000	2419
5000	6169
10000	12419
20000	24919

Remaining Issues

- The comparison was done on the early version of the WP-3D data, update need?
- The current version of WP-3D data offers > 4 nm number density while the DC-8 data has a size cut of 3 nm. Does this pose a serious problem?