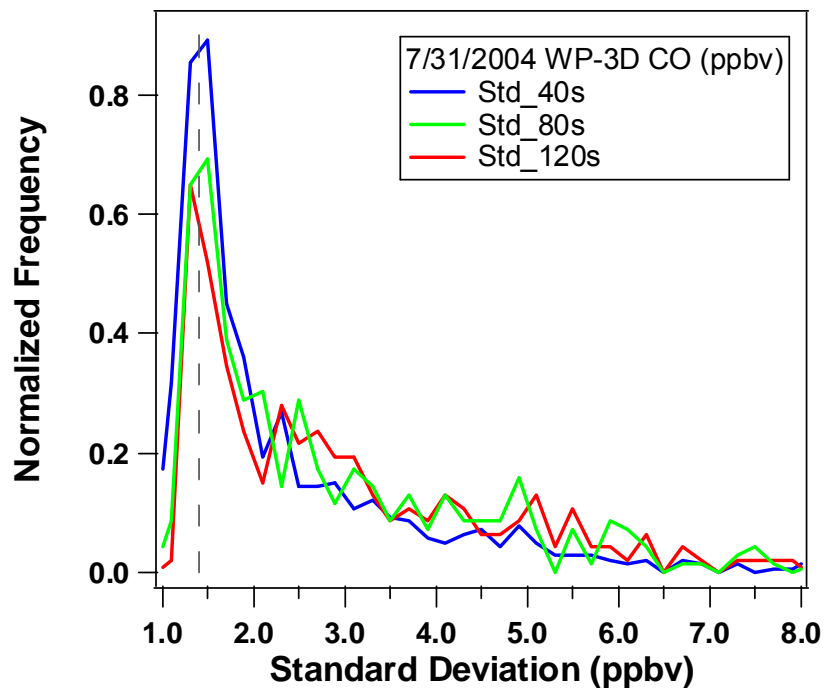


### Estimated CO Absolute Precision

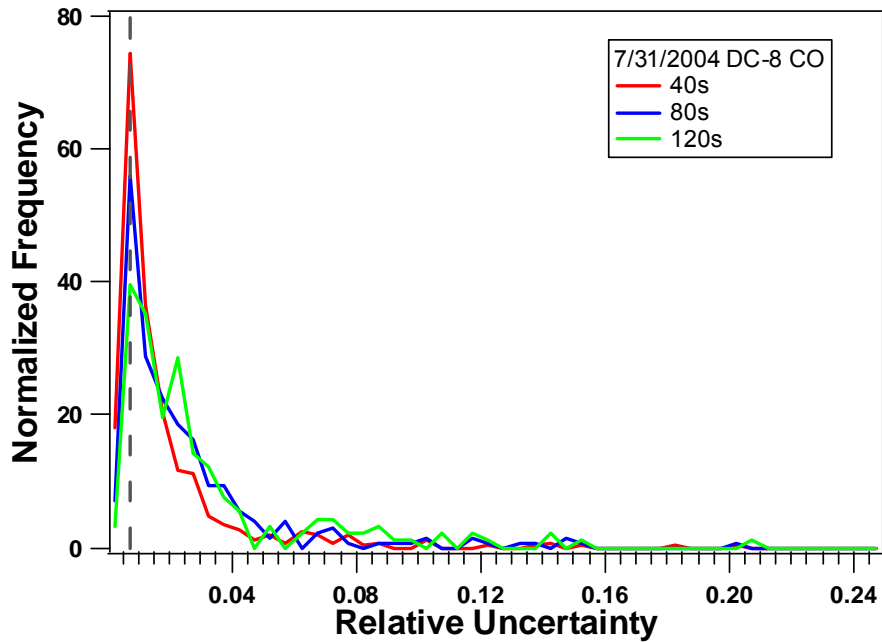
Date	DC-8 (ppbv)	WP-3D(ppbv)
07/22/2004	0.7	1.7
07/31/2004	0.6	1.4
08/07/2004	0.35	1.7



### PI Reported Uncertainty

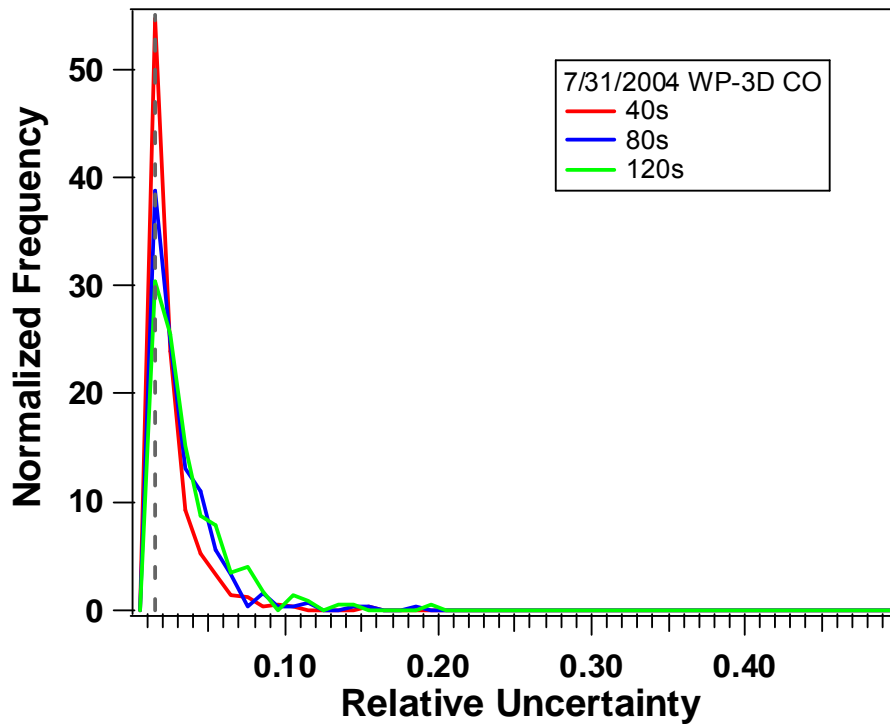
DC-8: 2% or 2 ppbv

WP-3D: 5%



### Estimated CO Relative Precision

Date	DC-8	WP-3D
07/22/2004	0.85%	1.2%
07/31/2004	0.76%	1.5%
08/07/2004	0.55%	1.4%



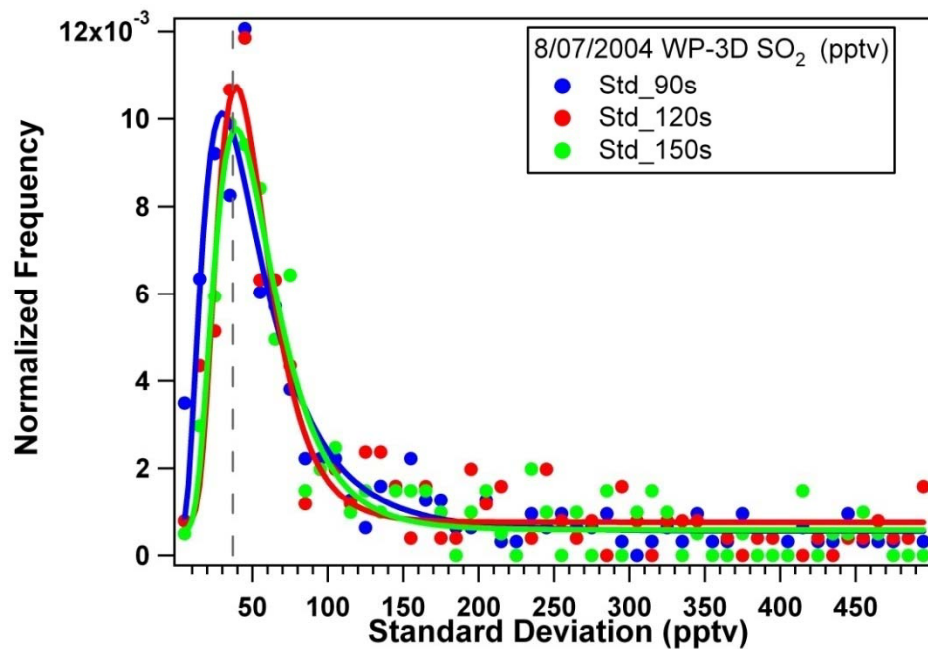
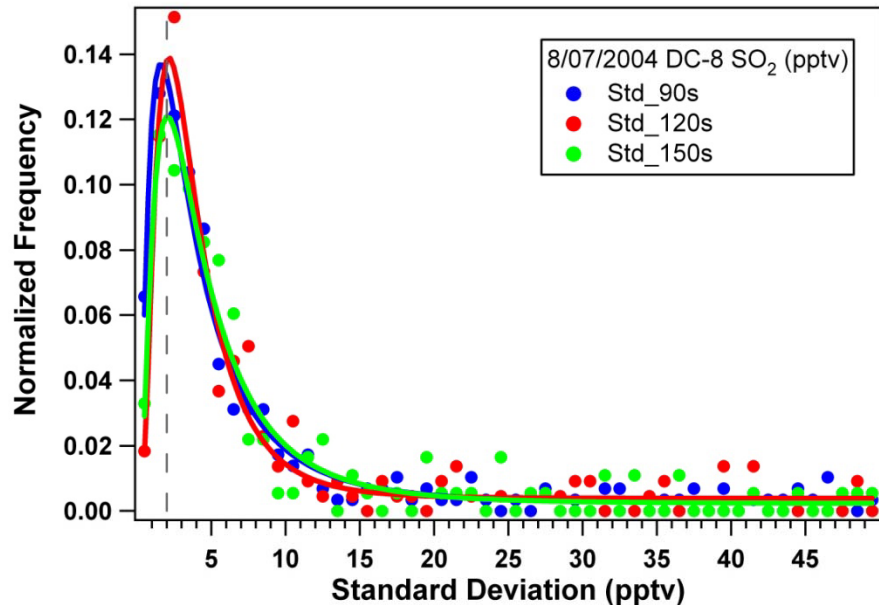
### PI Reported Uncertainty

DC-8: 2% or 2 ppbv

WP-3D: 5%

## Estimated SO<sub>2</sub> Absolute Precision

Date	DC-8 (pptv)	WP-3D (pptv)
07/22/2004	3	40
07/31/2004	1.5	33
08/07/2004	2	37



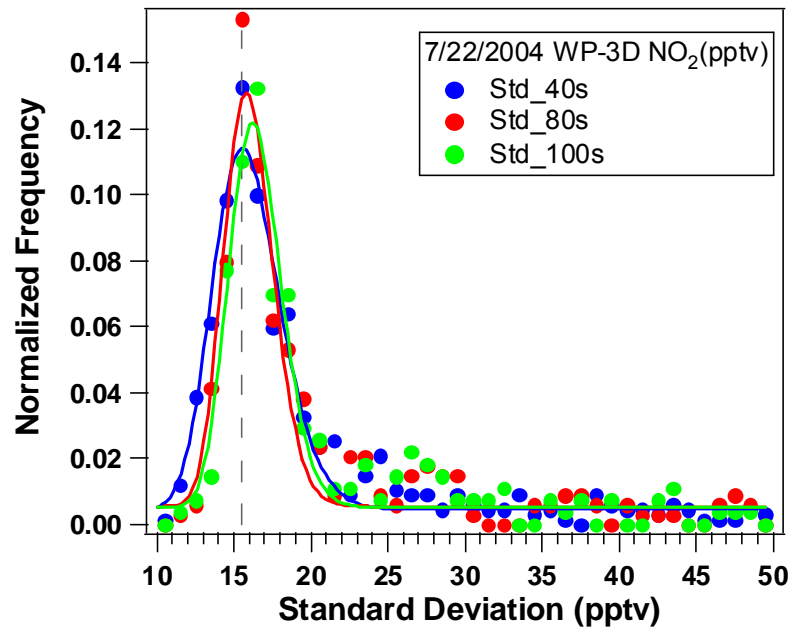
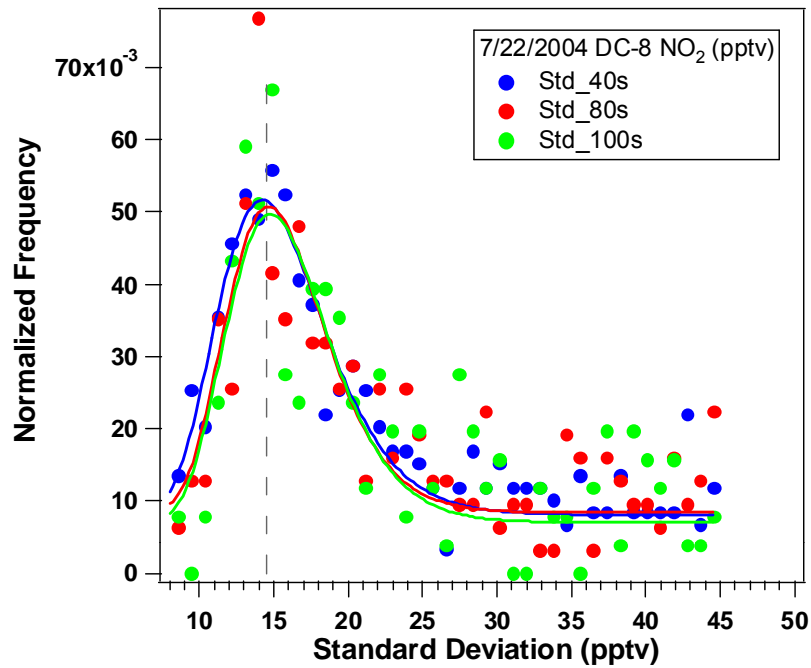
## PI Reported Uncertainty

DC-8: 9%

WP-3D: 15%

## Estimated NO<sub>2</sub> Absolute Precision

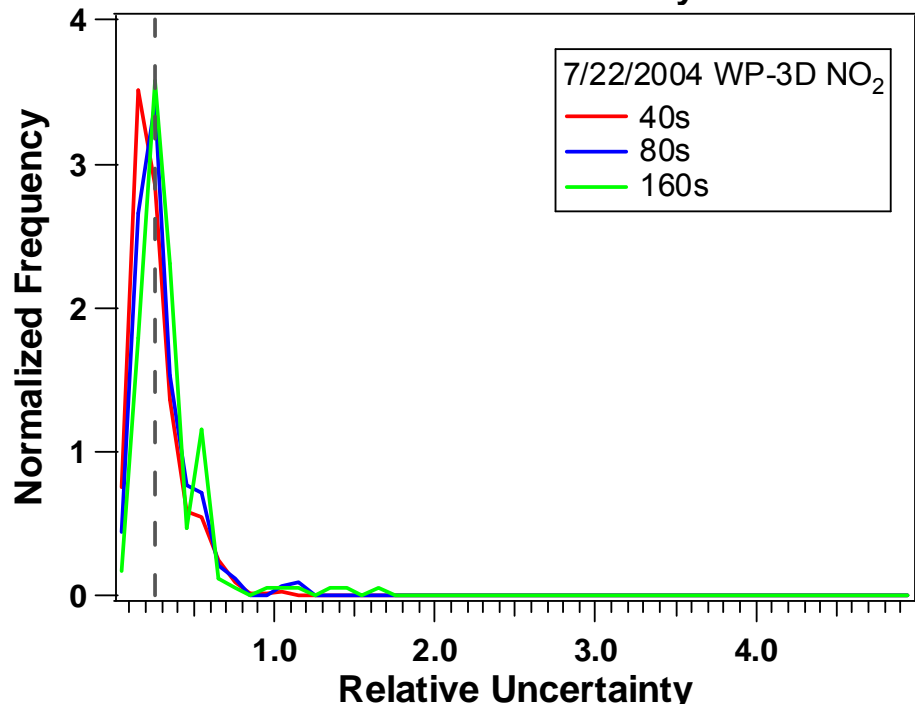
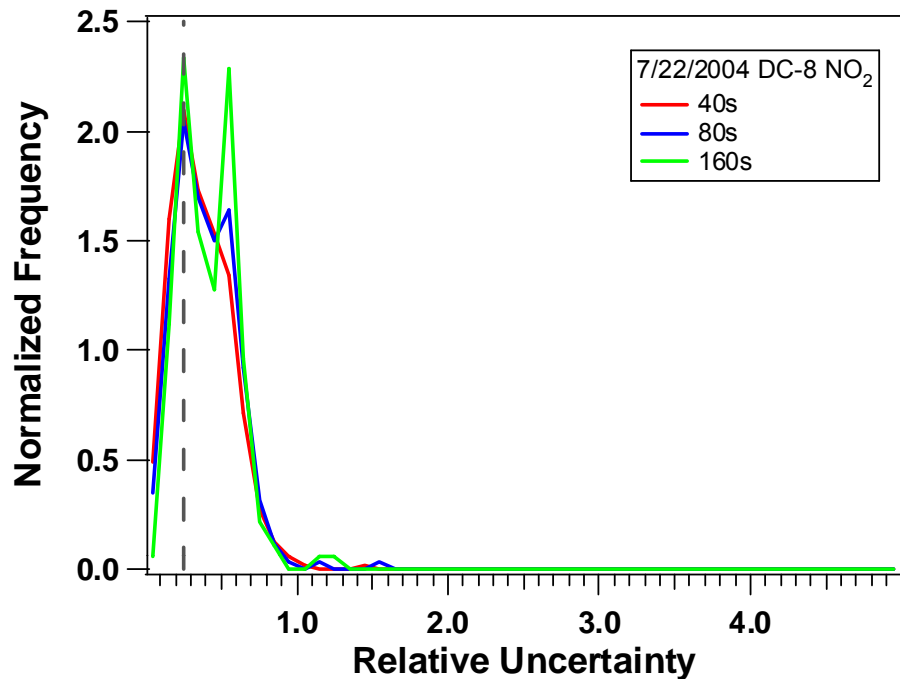
Date	DC-8 (pptv)	WP-3D(pptv)
07/22/2004	14.5	15.5
07/31/2004	8.5	17
08/07/2004	13	23



## PI Reported Uncertainty

DC-8: 5%

WP-3D: 0.025 ppbv+8%



### Estimated NO<sub>2</sub> Relative Precision

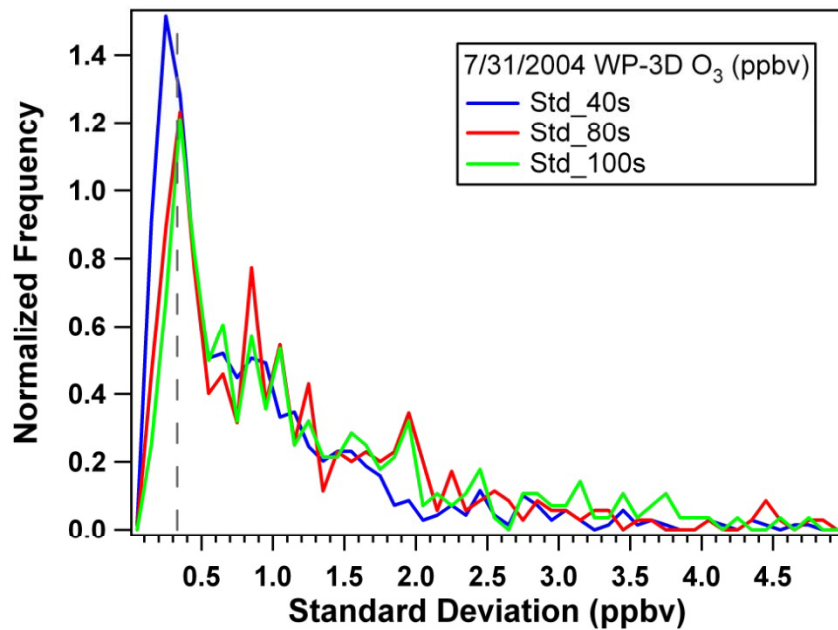
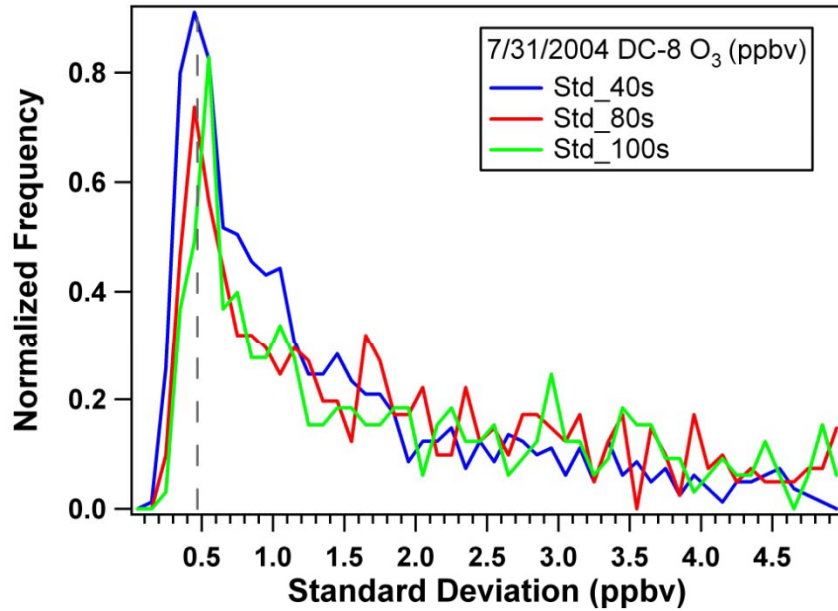
Date	DC-8	WP-3D
07/22/2004	25%	25%
07/31/2004	45.5%	16%
08/07/2004	46%	15%

### PI Reported Uncertainty

DC-8: 5%
WP-3D: 0.025 ppbv +8%

## Estimated O<sub>3</sub> Absolute Precision

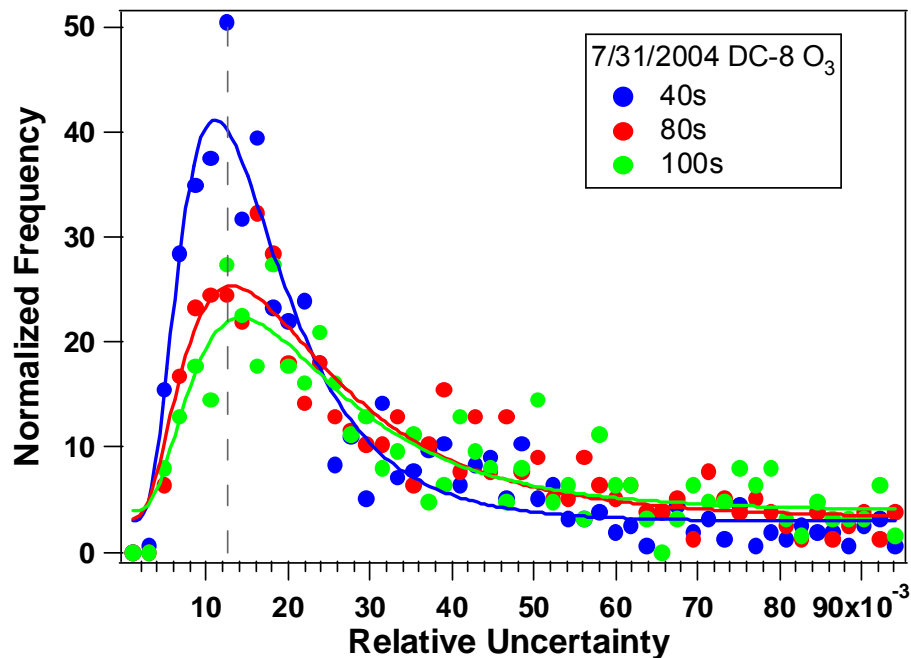
Date	DC-8 (ppbv)	WP-3D(ppbv)
07/22/2004	1.5	1.5
07/31/2004	0.47	0.37
08/07/2004	1.0	0.45



## PI Reported Uncertainty

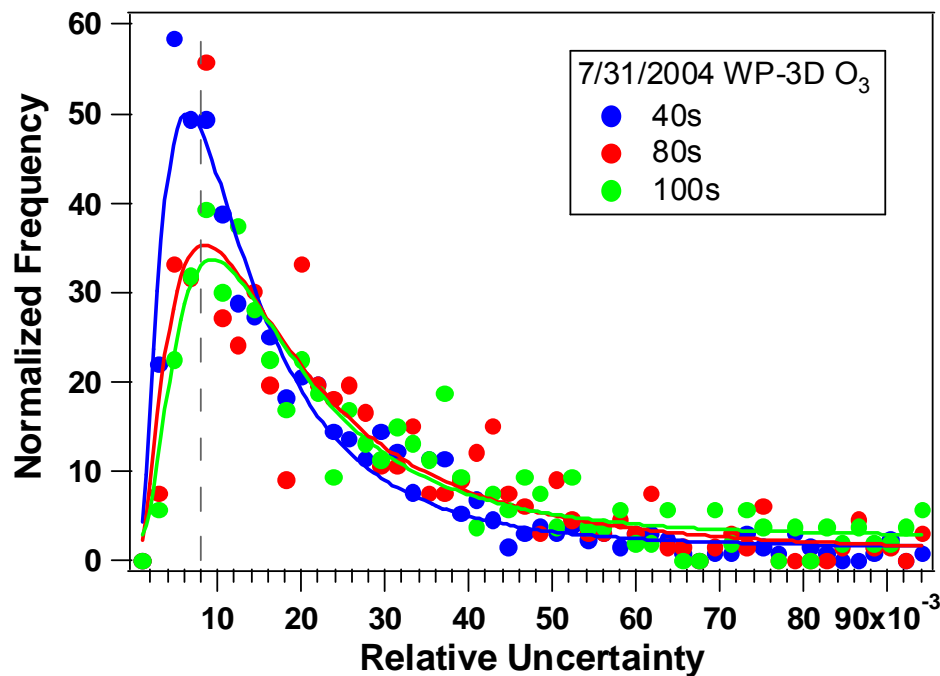
DC-8: 3 ppbv or 3%

WP-3D: 0.1 ppbv +3%



### Estimated O<sub>3</sub> Relative Precision

Date	DC-8	WP-3D
07/22/2004	1.2%	1.4%
07/31/2004	1.25%	0.8%
08/07/2004	1.2%	1.0%



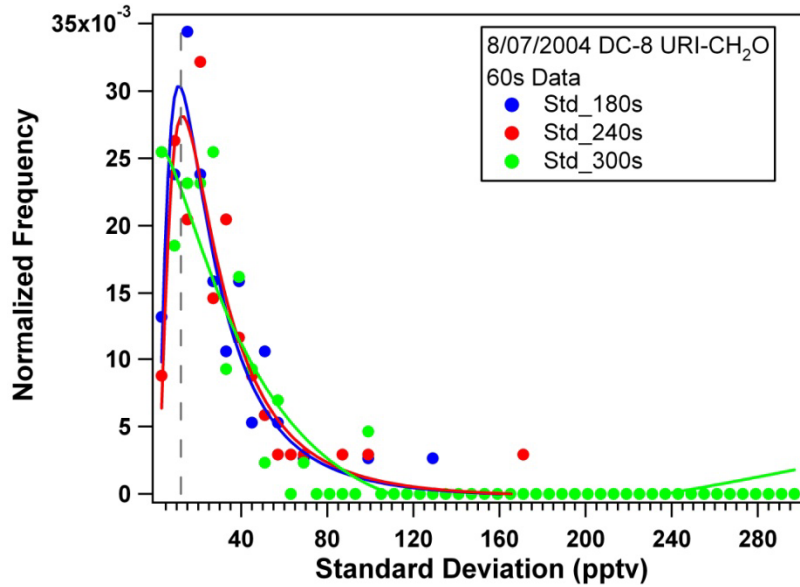
### PI Reported Uncertainty

DC-8: 3 ppbv or 3%

WP-3D: 0.1 ppbv +3%

## Estimated CH<sub>2</sub>O Absolute Precision

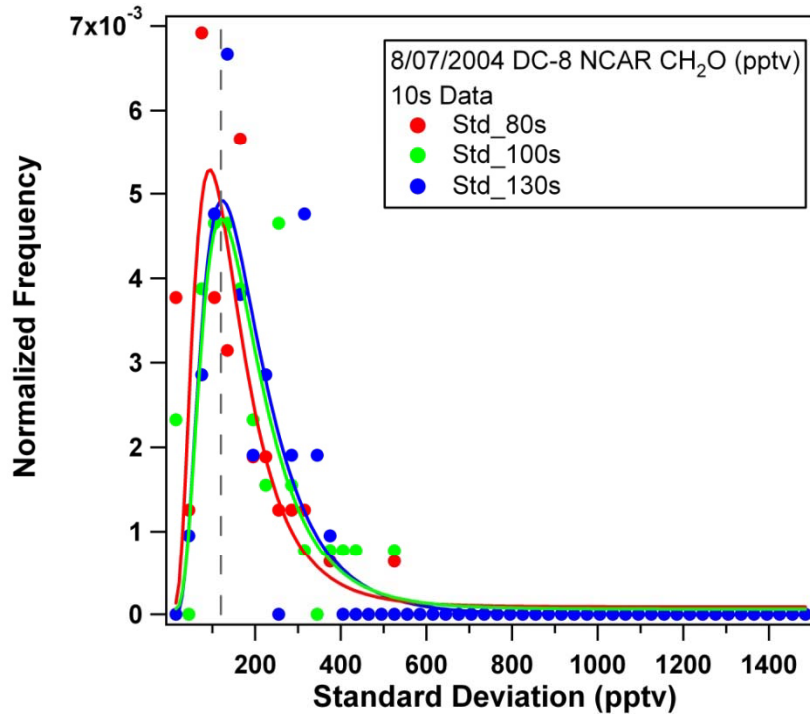
Date	DC-8: URI (pptv)	DC-8: NCAR (pptv)
07/22/2004	65	~160
07/31/2004	16	~135
08/07/2004	12	~120



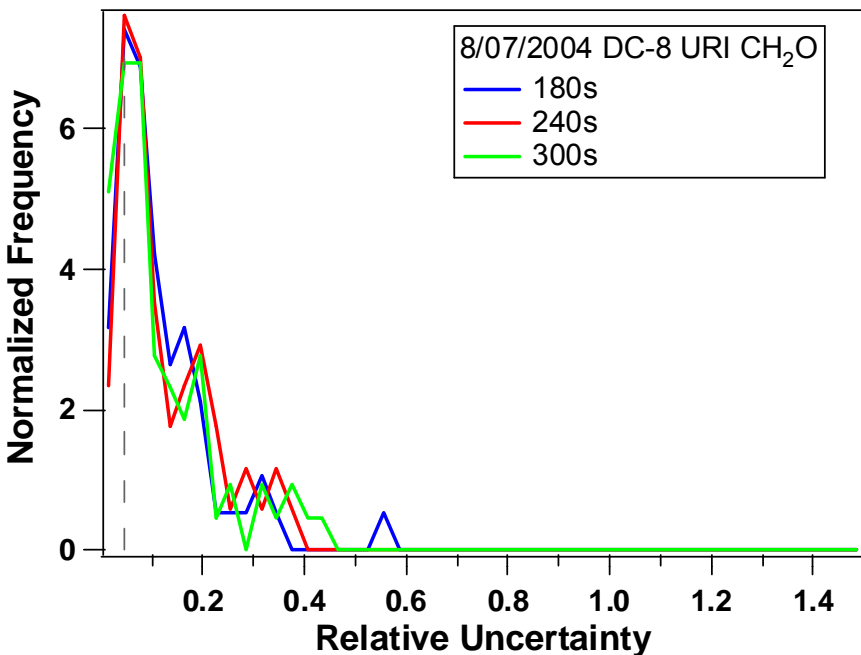
## PI Reported Uncertainty

DC-8 (URI):

DC-8 (NCAR):

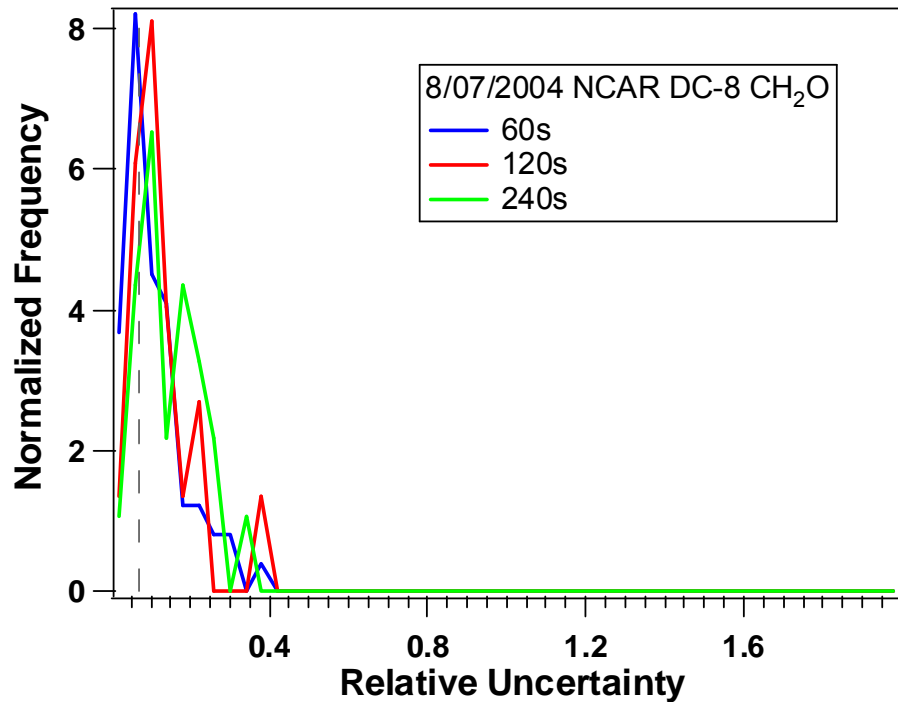






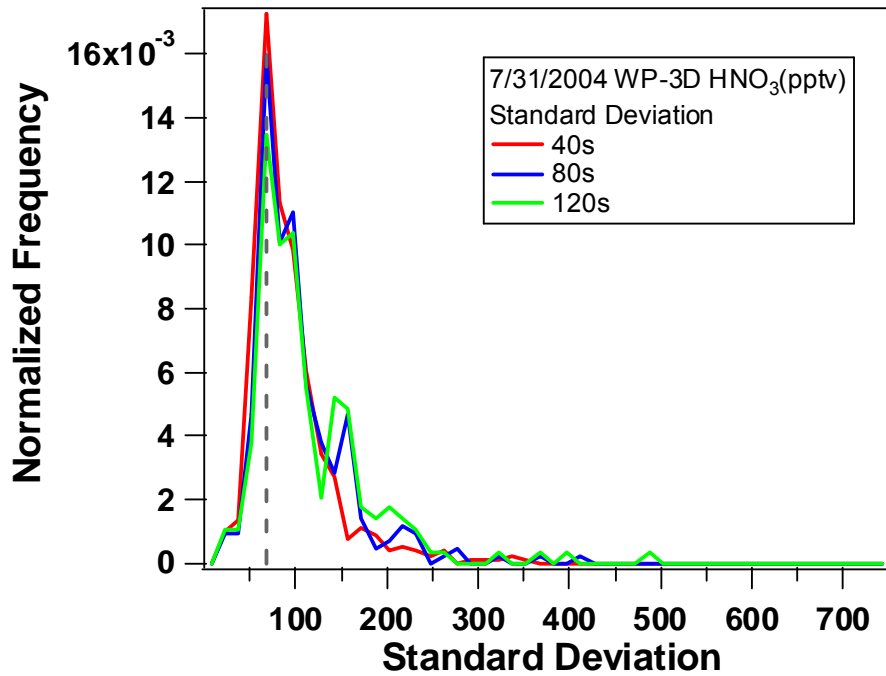
### Estimated CH<sub>2</sub>O Relative Precision

Date	DC-8: URI	DC-8: NCAR
07/22/2004	11%	6%
07/31/2004	15%	5%
08/07/2004	5%	7%



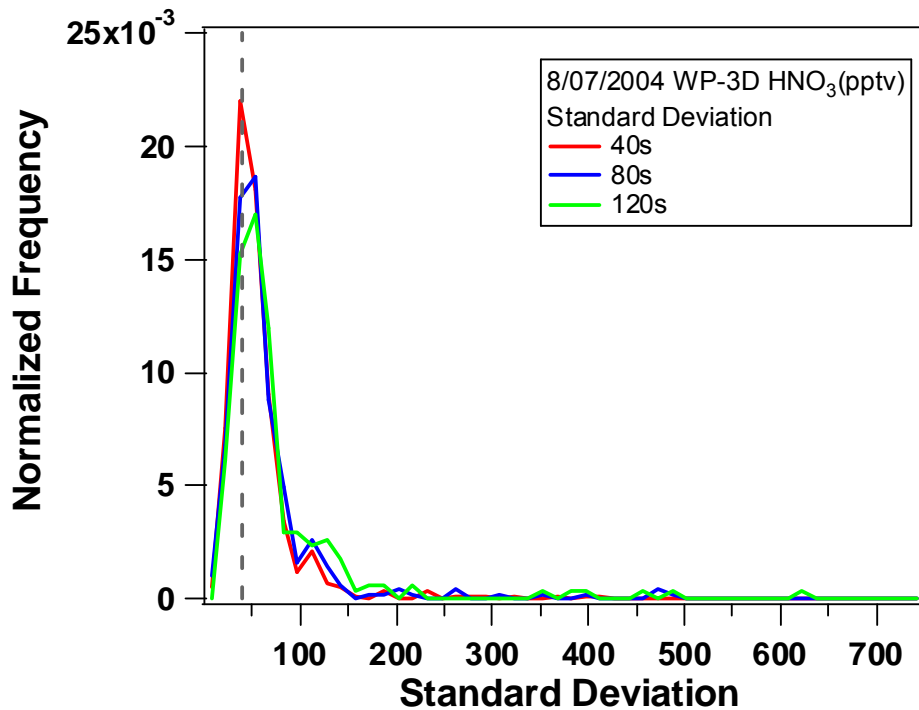
### PI Reported Uncertainty

DC-8 (URI):
DC-8 (NCAR):



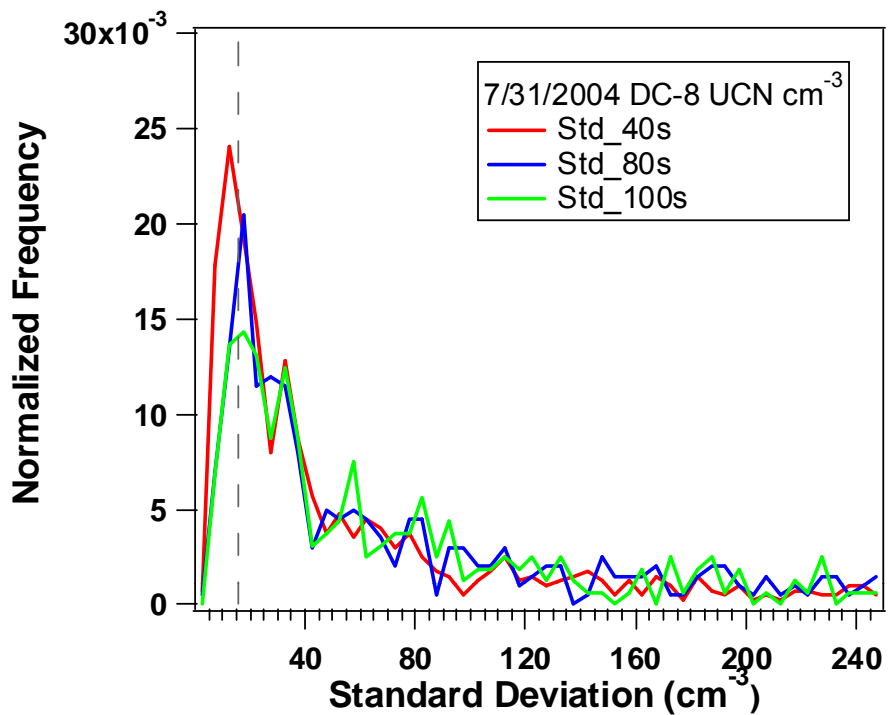
### Estimated HNO<sub>3</sub> Absolute Precision

Date	DC-8 (pptv)	WP-3D (pptv)
07/22/2004		100
07/31/2004		67.5
08/07/2004		40



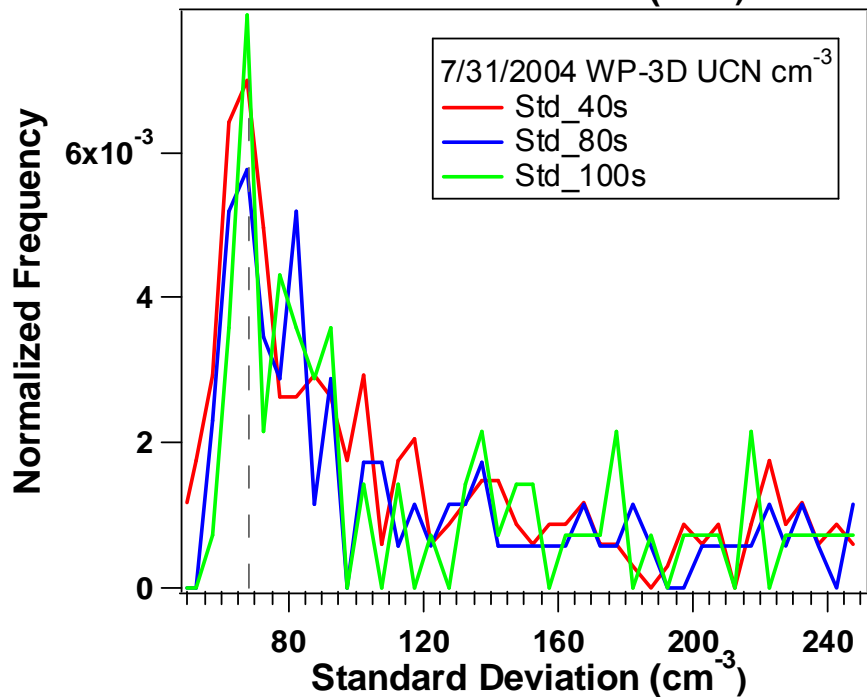
### PI Reported Uncertainty

DC-8: 30-35%
WP-3D: 1 $\sigma$ precision=20pptv Accuracy= 15%+50pptv



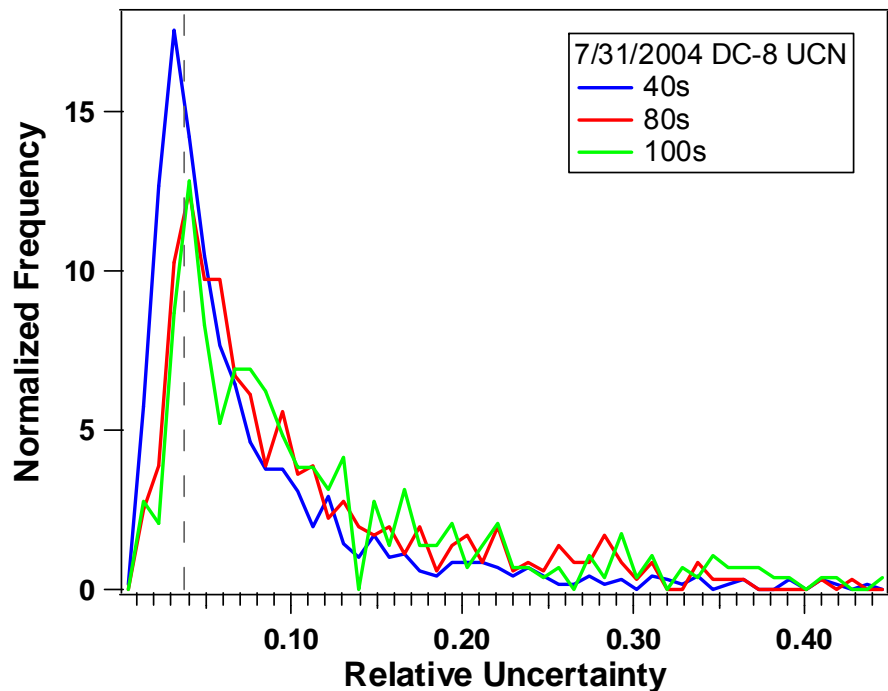
### Estimated UCN cm<sup>-3</sup> Absolute Precision

Date	DC-8:UCN (cm <sup>-3</sup> )	WP-3D:UCN (cm <sup>-3</sup> )
07/22/2004	35	90
07/31/2004	16	68.5
08/07/2004	6	90



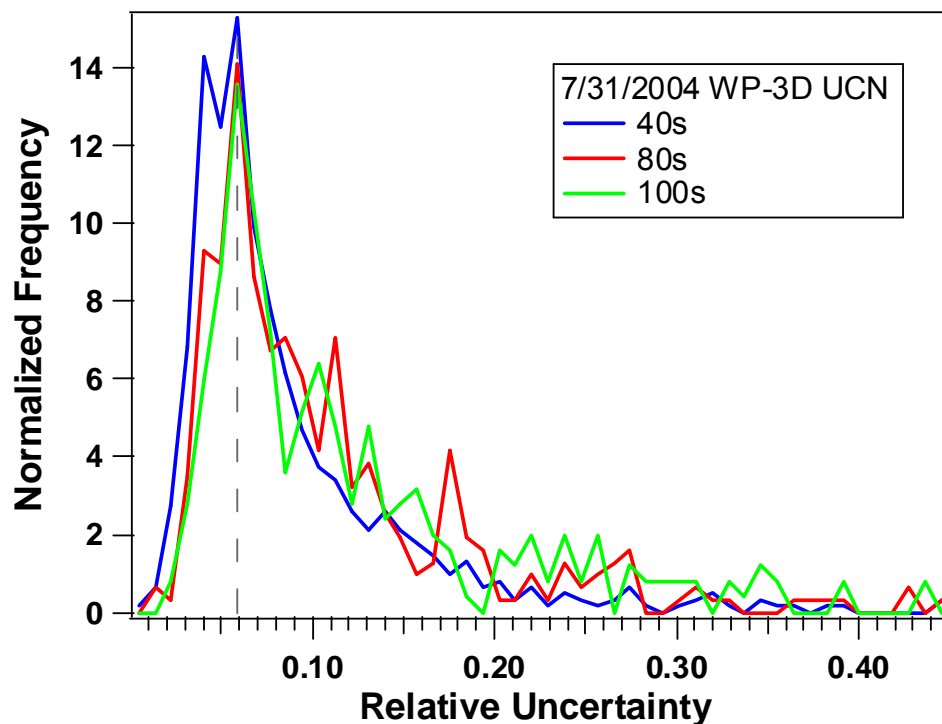
### PI Reported Uncertainty

DC-8: 10%
WP-3D: ~10%



### Estimated UCN Relative Precision

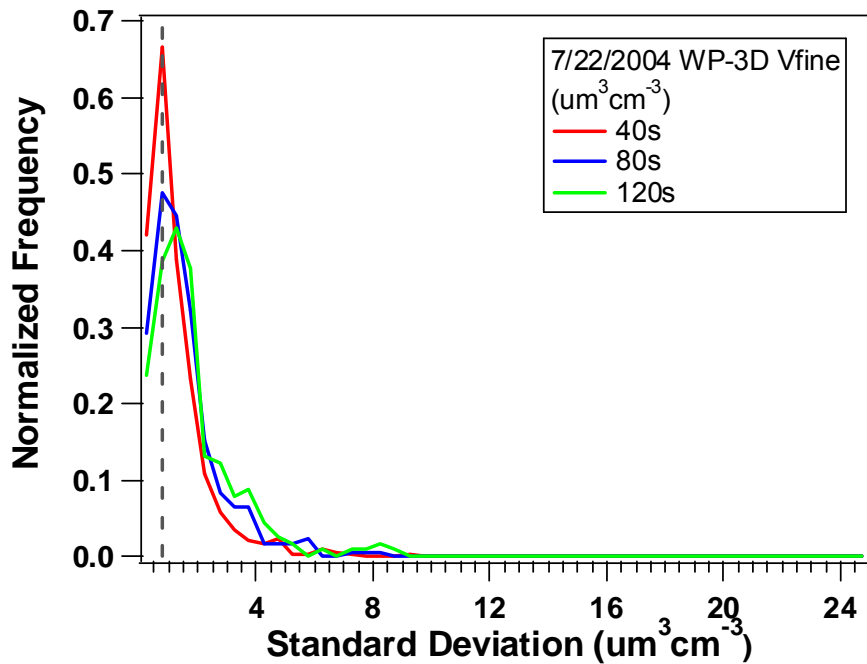
Date	DC-8:UCN	WP-3D:UCN
07/22/2004	2.5%	6.45%
07/31/2004	3.75%	5.8%
08/07/2004	8.0%	7.9%



### PI Reported Uncertainty

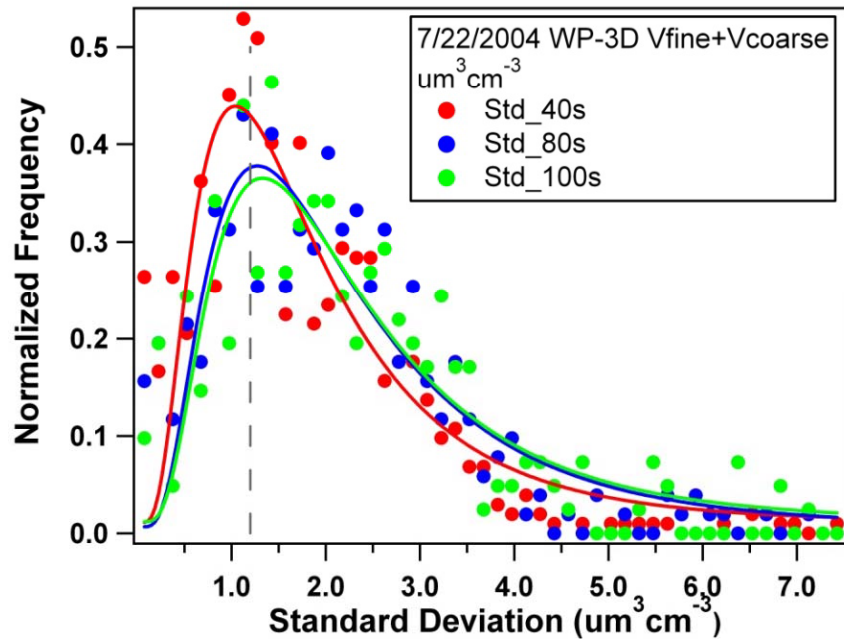
DC-8: 10%

WP-3D: ~10%



### Estimated Vfine & Vfine+Vcoarse $\mu\text{m}^3\text{cm}^{-3}$ Absolute Precision

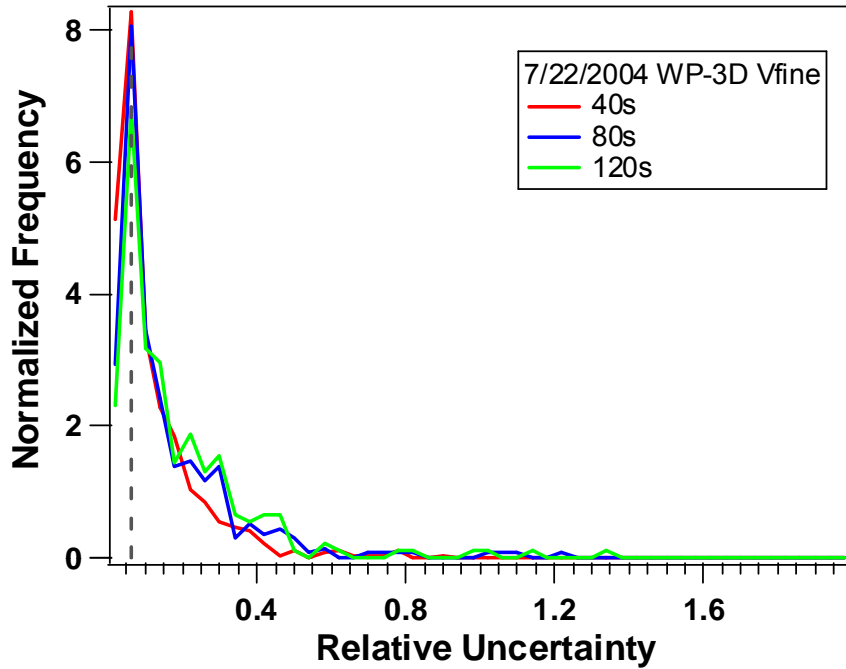
Date0	WP-3D: Vfine ( $\mu\text{m}^3\text{cm}^{-3}$ )	WP-3D: Vfine + Vcoarse ( $\mu\text{m}^3\text{cm}^{-3}$ )
07/22/2004	0.75	1.2
07/31/2004	0.12	0.76
08/07/2004	0.14	0.15



### PI Reported Uncertainty

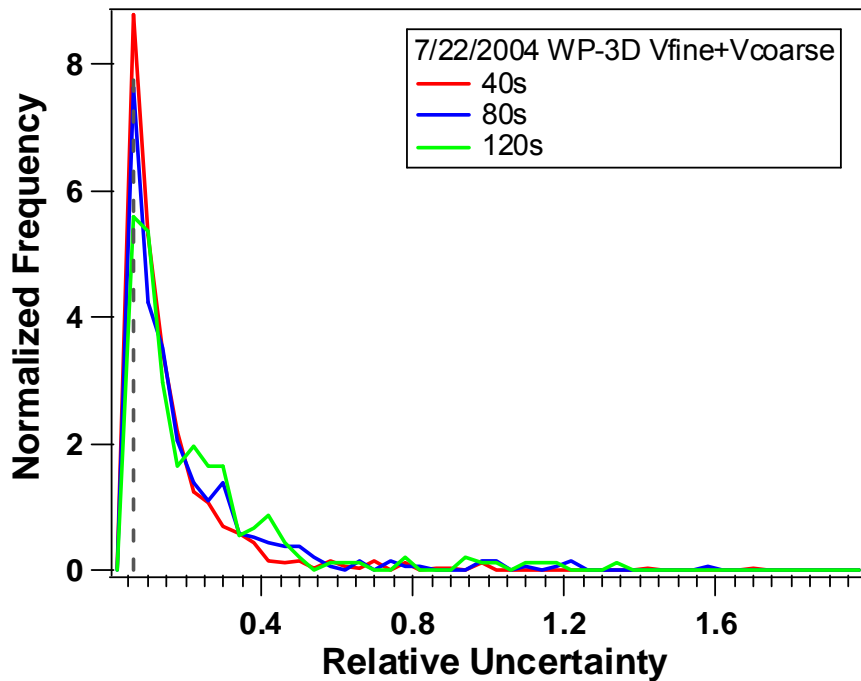
WP-3D (vfine): ~50%

WP-3D (vfine+vcoarse):



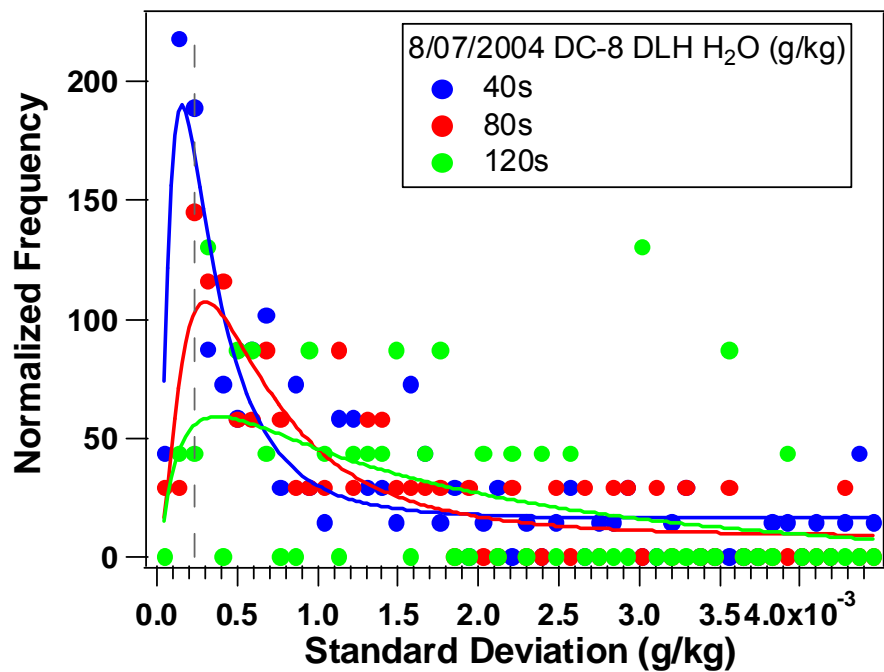
### Estimated Vfine & Vfine+Vcoarse Relative Precision

Date	WP-3D:Vfine	WP-3D: Vfine + Vcoarse
07/22/2004	6.0%	6.0%
07/31/2004	4.6%	15.5%
08/07/2004	4.0%	25%



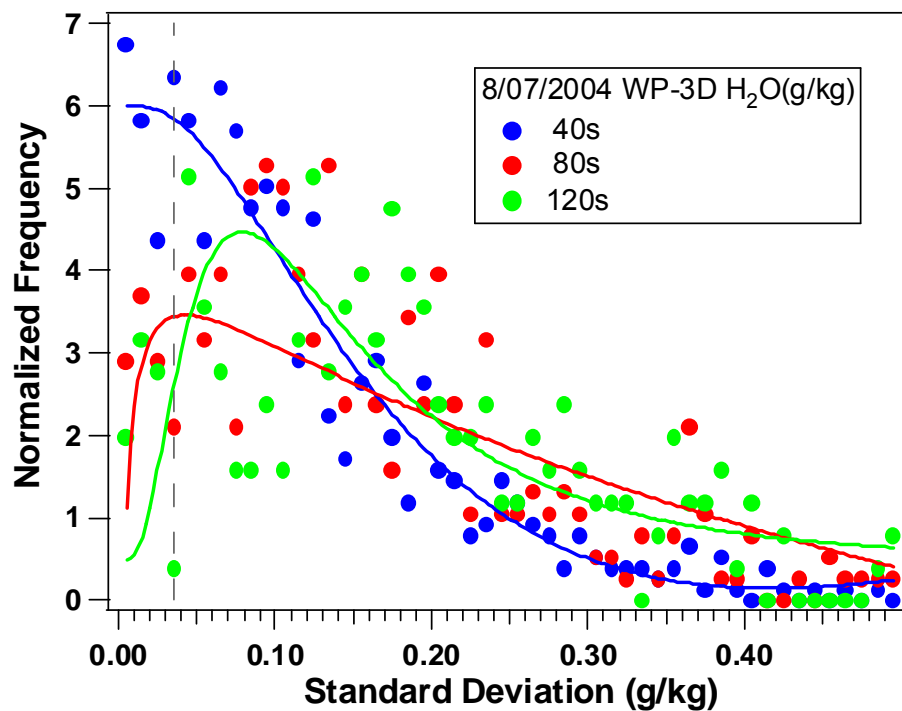
### PI Reported Uncertainty

WP-3D (vfine): ~50%
WP-3D (vfine+vcoarse):



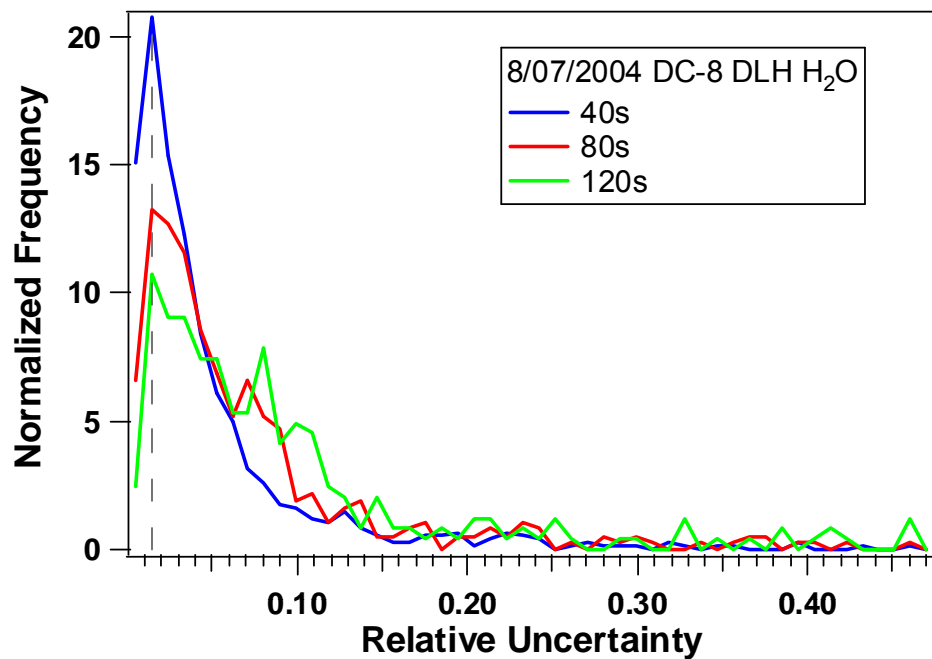
### Estimated H<sub>2</sub>O Absolute Precision

Date	DC-8 (g/kg)	WP-3D (g/kg)
07/22/2004	0.089	~0.10
07/31/2004	0.0018	~0.10
08/07/2004	0.00023	~0.035



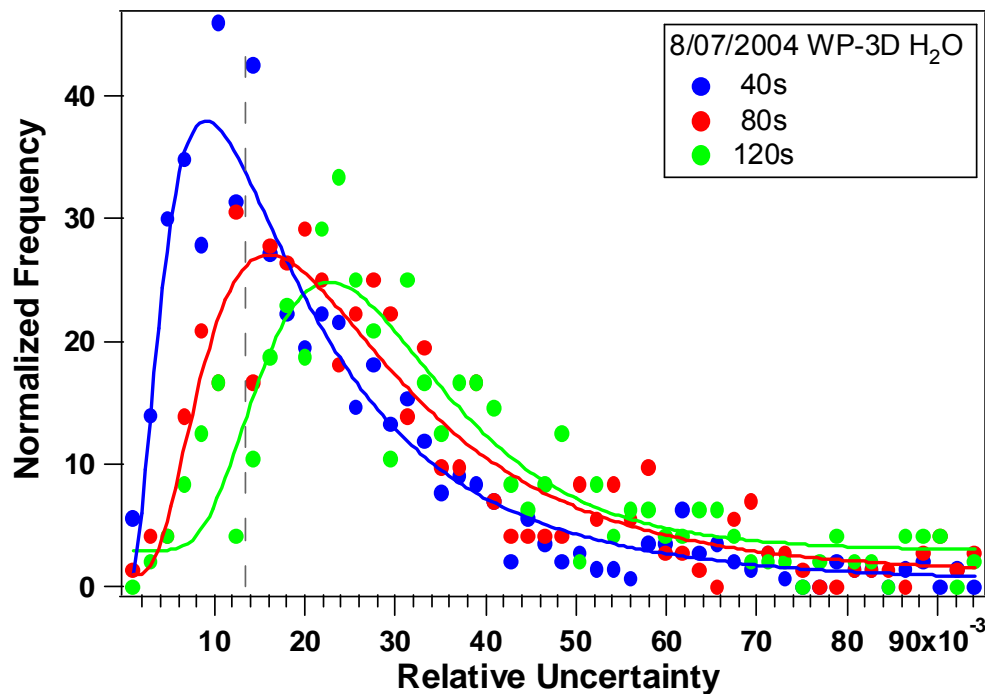
### PI Reported Uncertainty

DC-8: 5%
WP-3D



### Estimated H<sub>2</sub>O Relative Precision

Date	DC-8	WP-3D
07/22/2004	1.49%	1.2%
07/31/2004	~0.9%	~0.68%
08/07/2004	1.45%	~1.35%



### PI Reported Uncertainty

DC-8: 5%
WP-3D