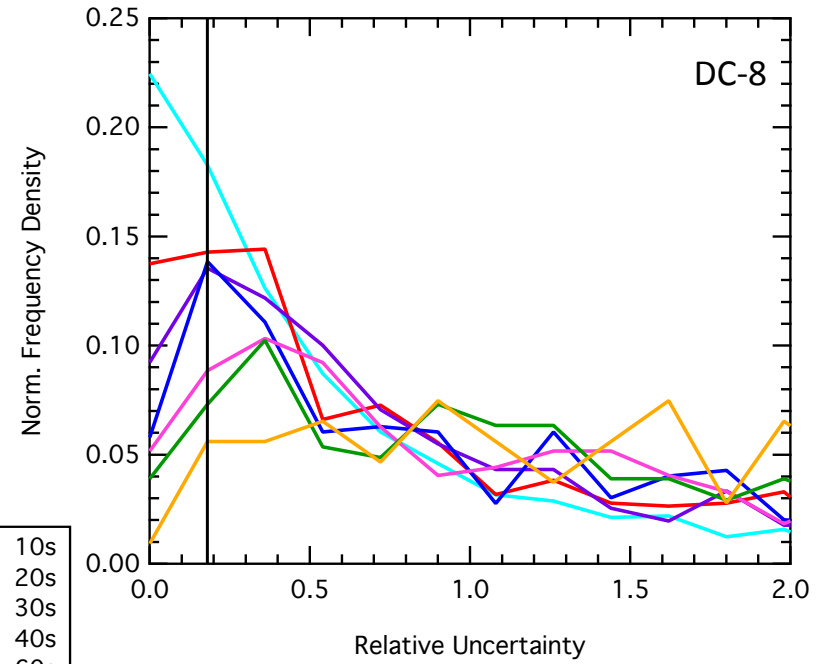
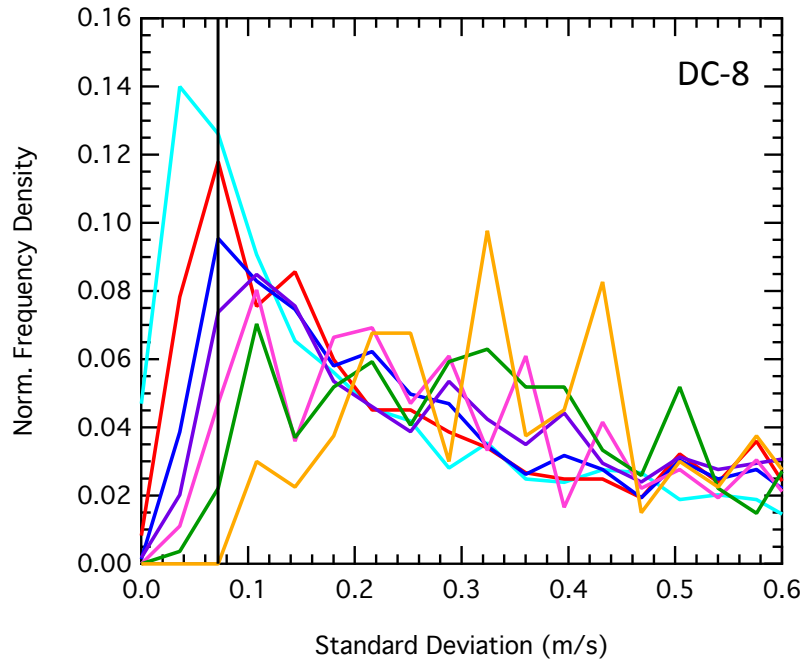
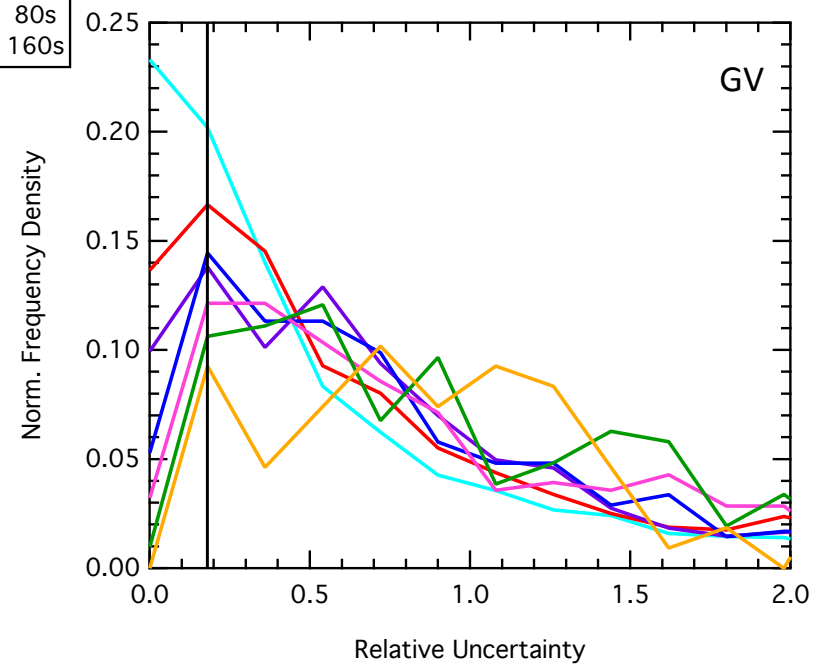
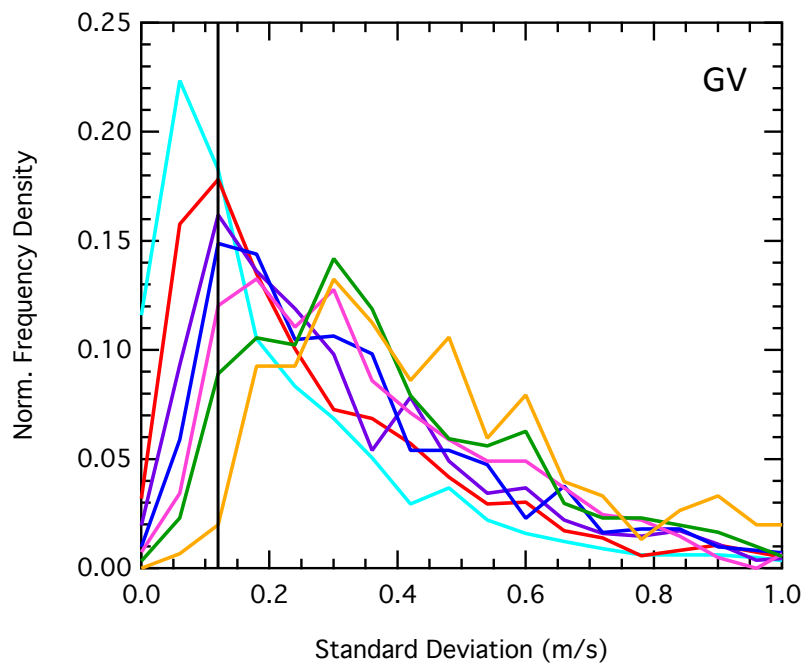


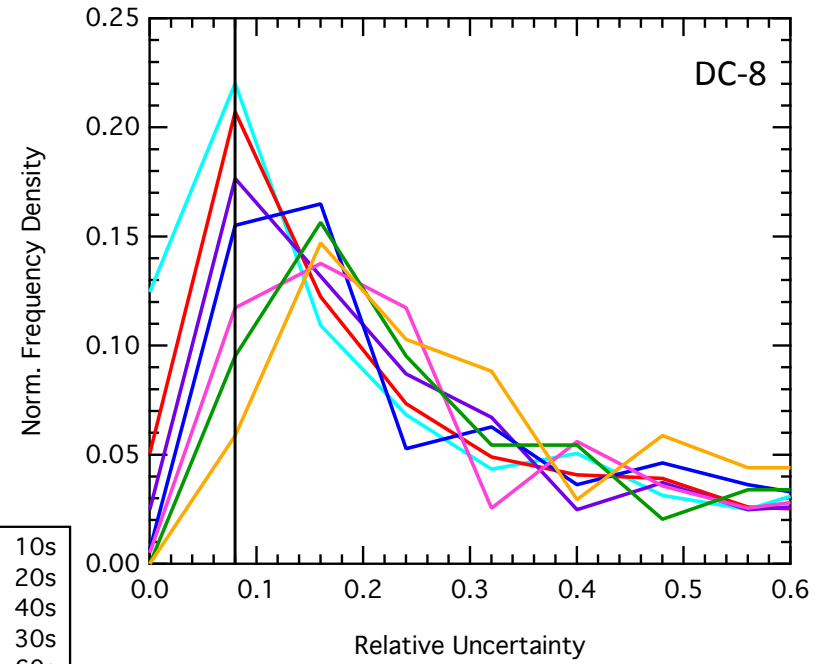
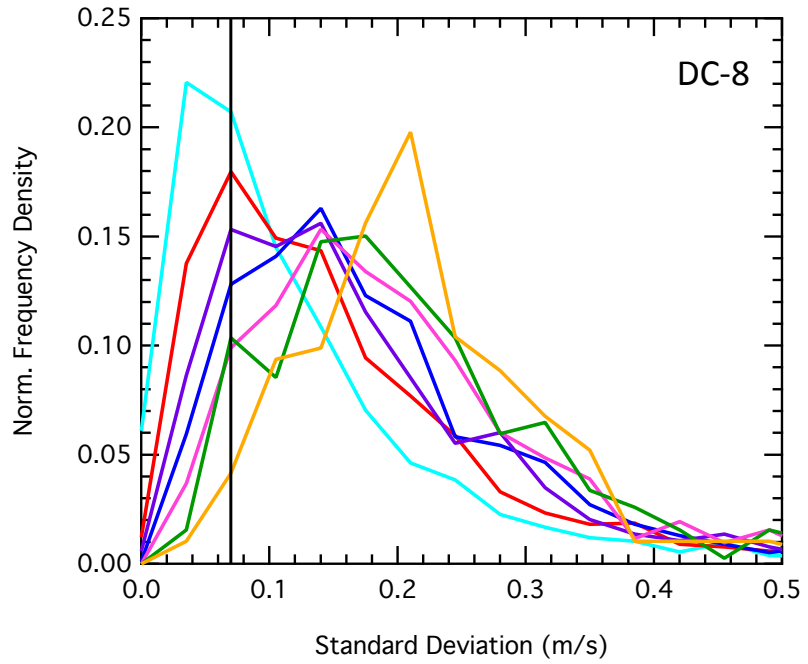
W



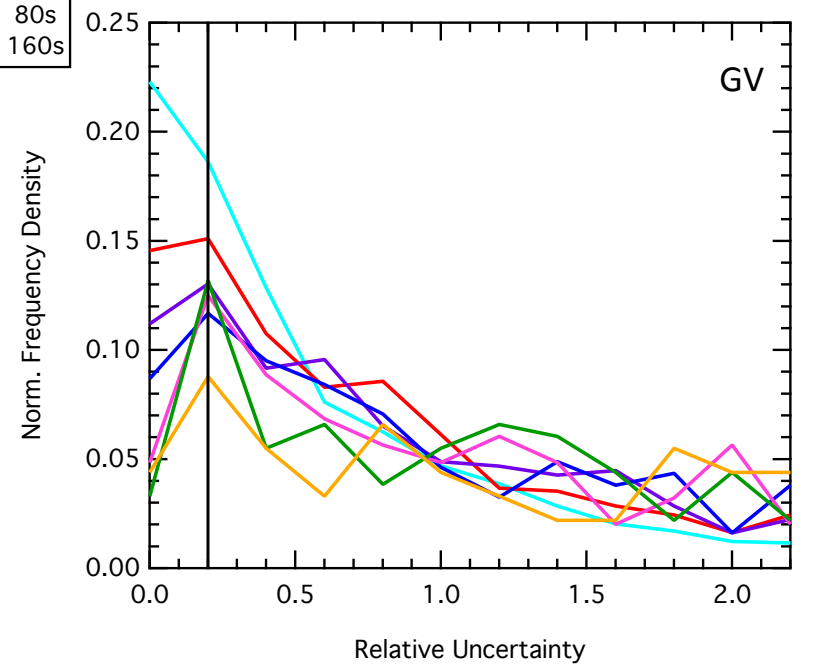
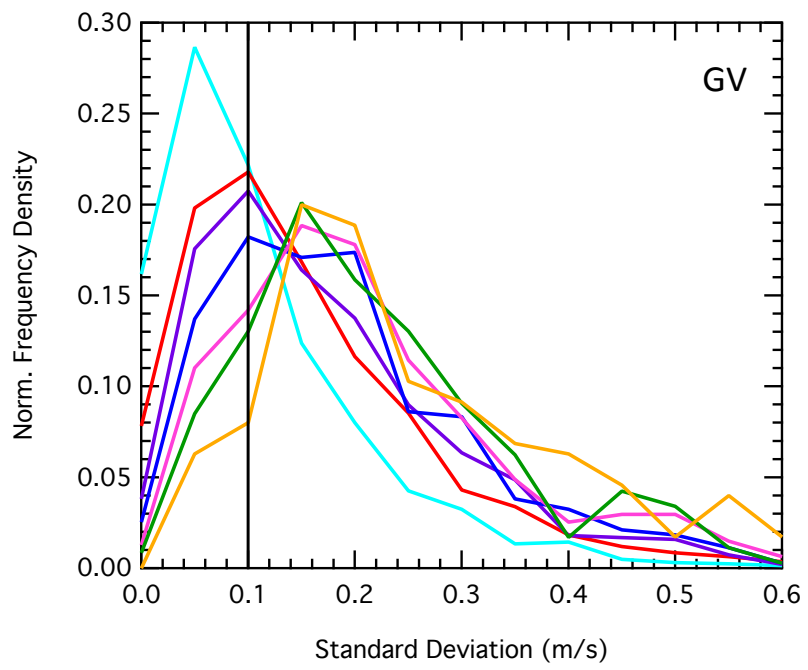
- 10s
- 20s
- 30s
- 40s
- 60s
- 80s
- 160s



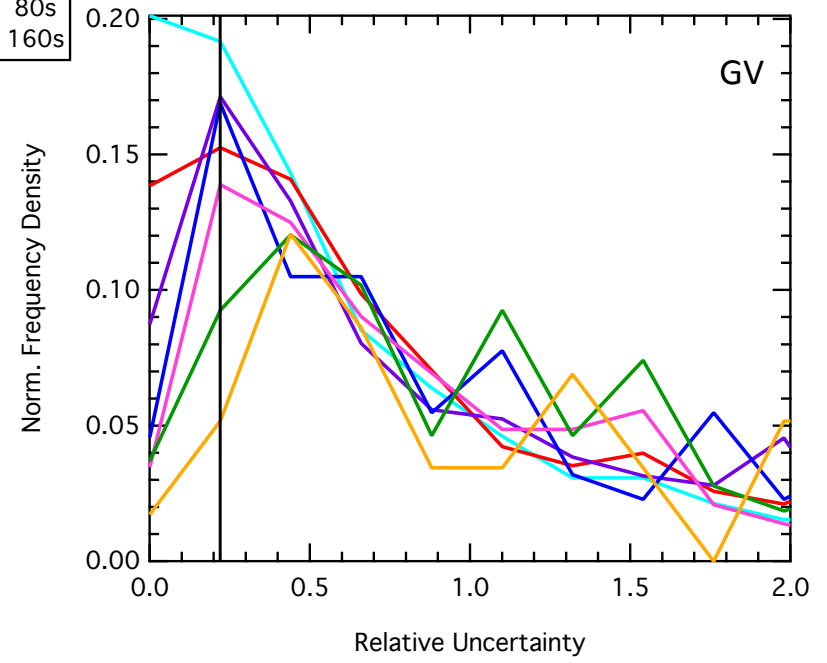
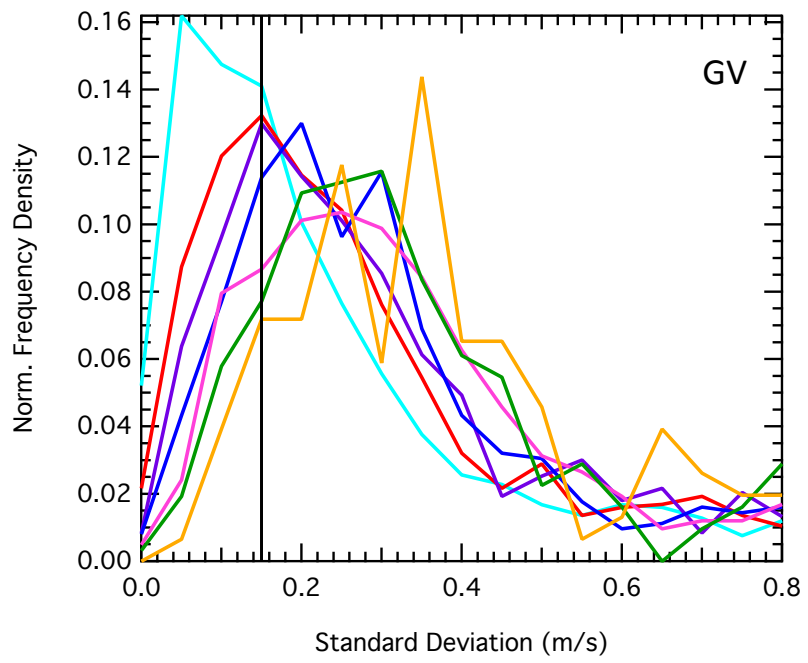
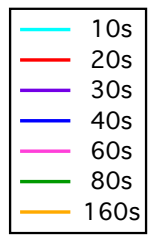
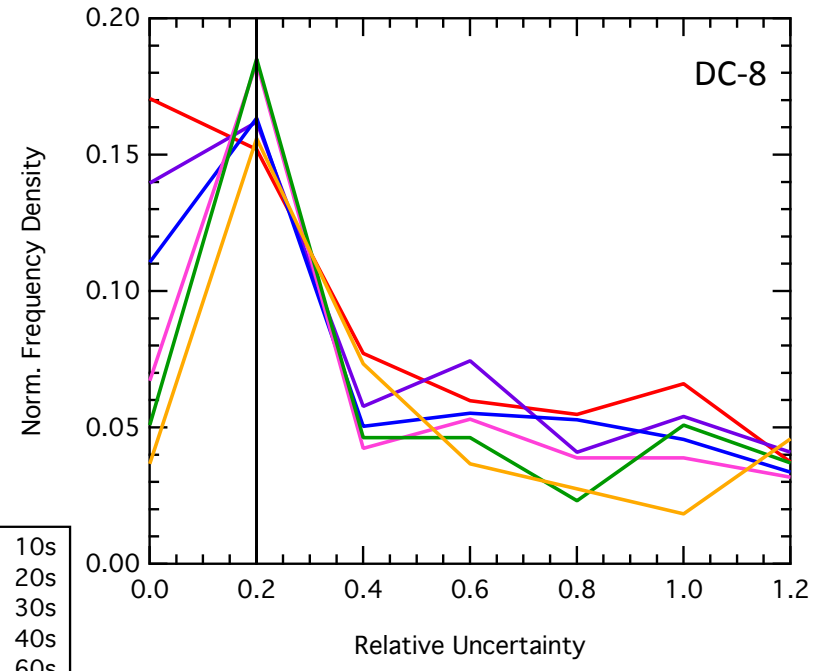
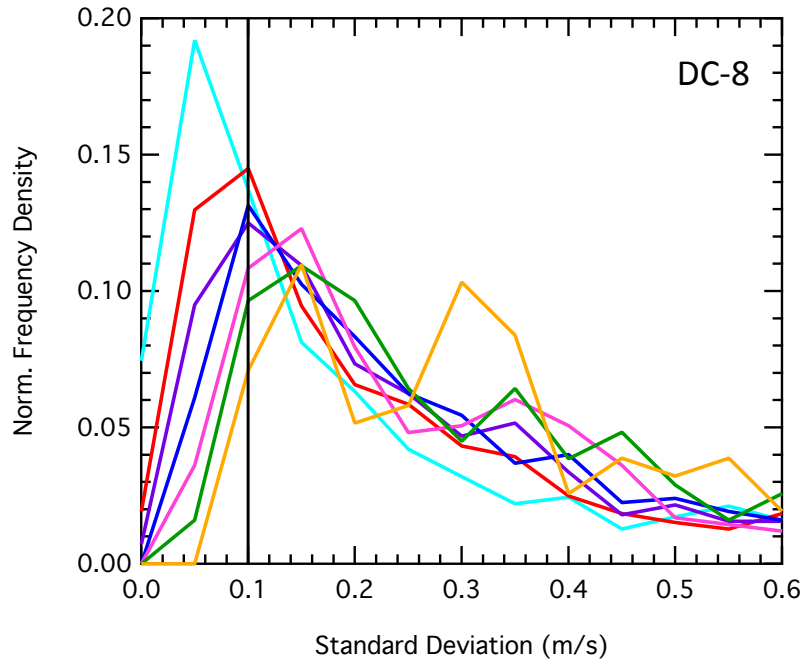
W



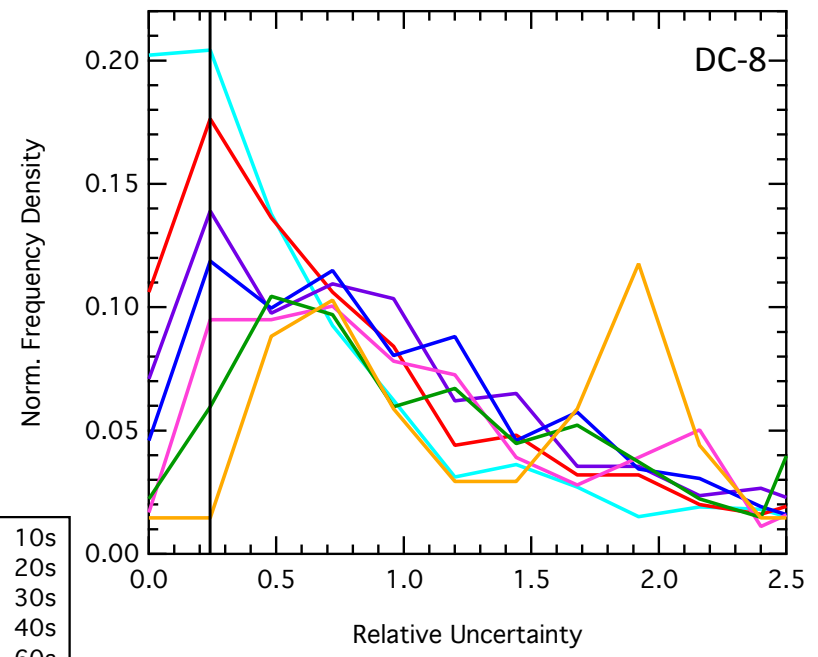
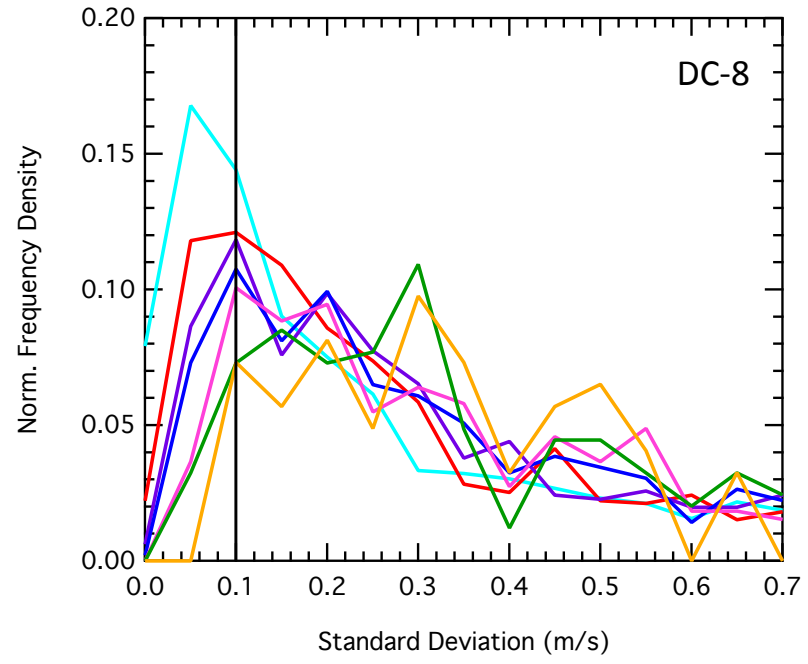
- 10s
- 20s
- 40s
- 30s
- 60s
- 80s
- 160s



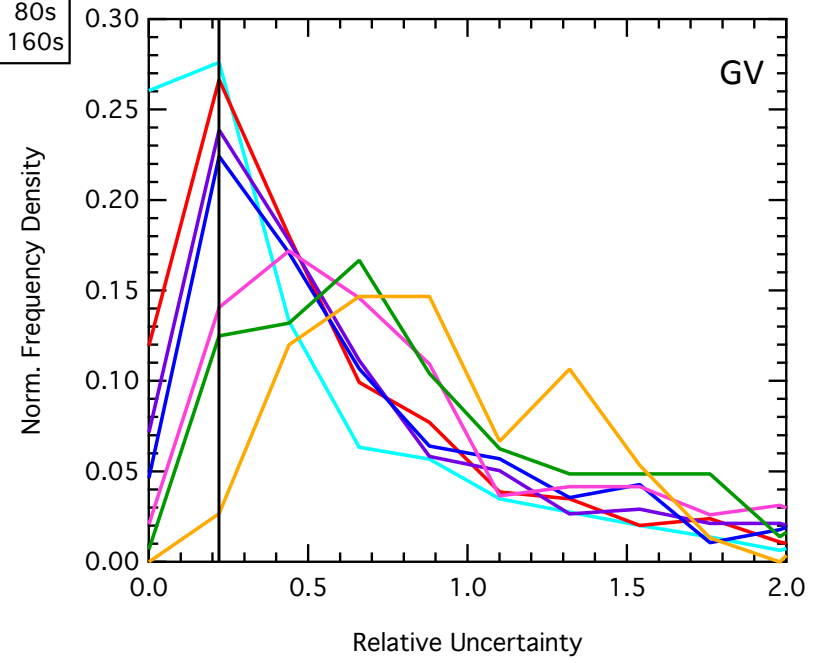
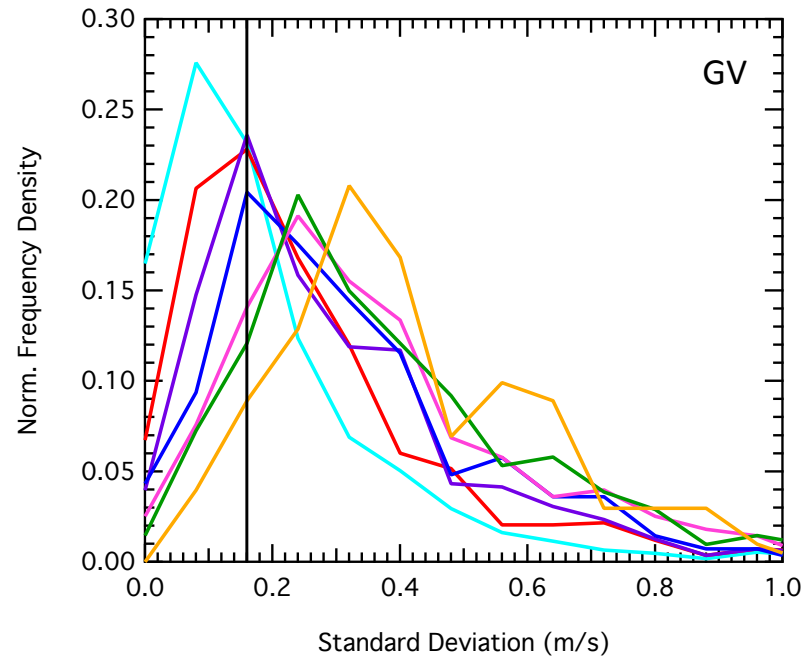
W



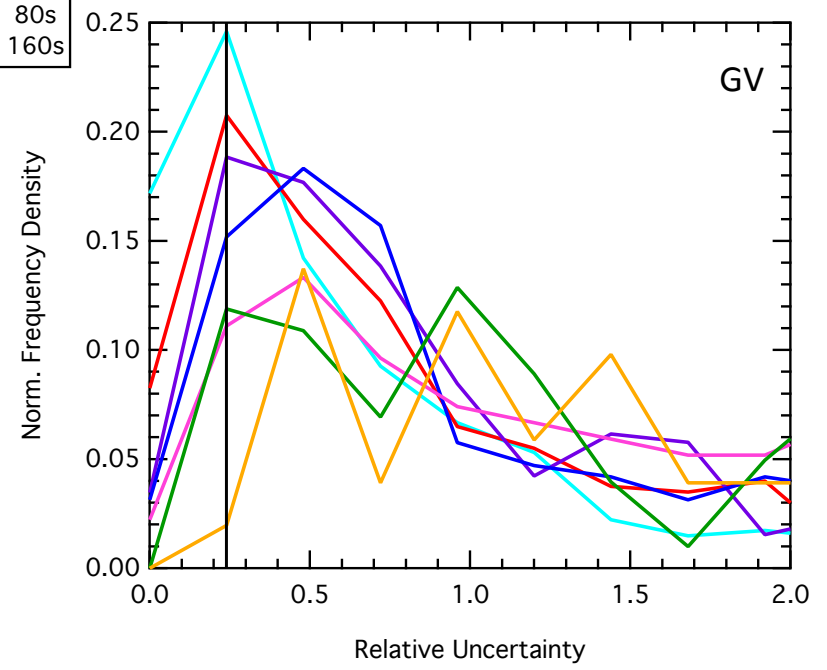
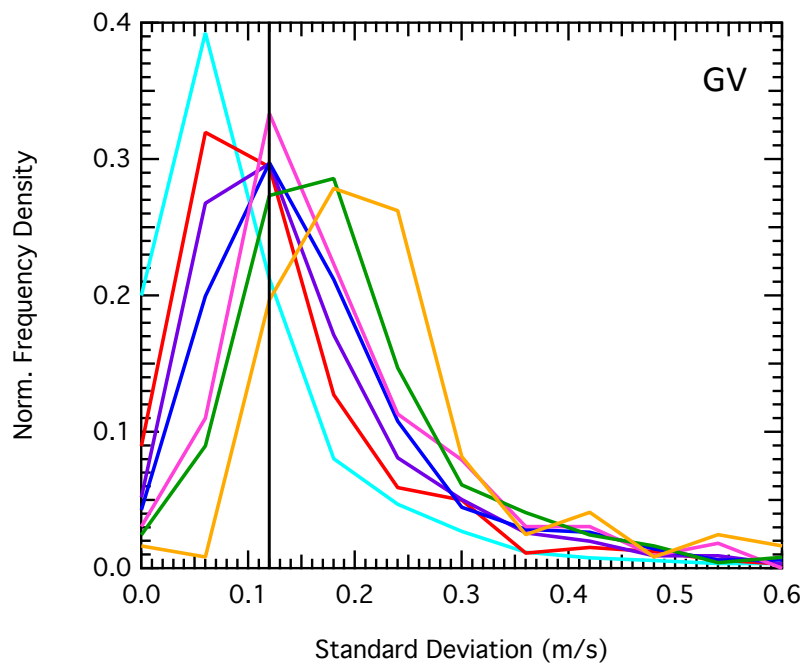
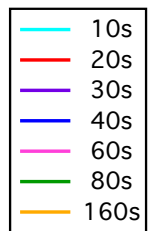
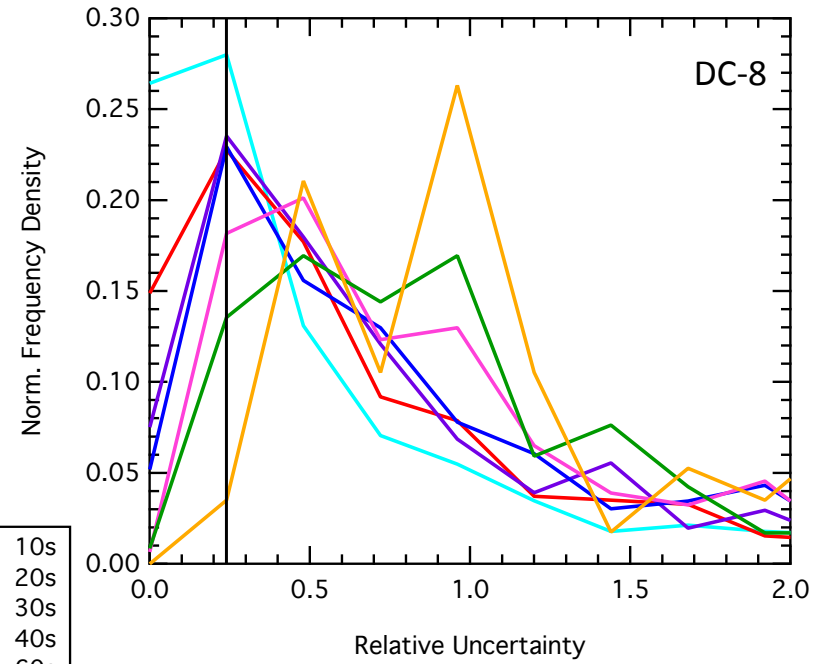
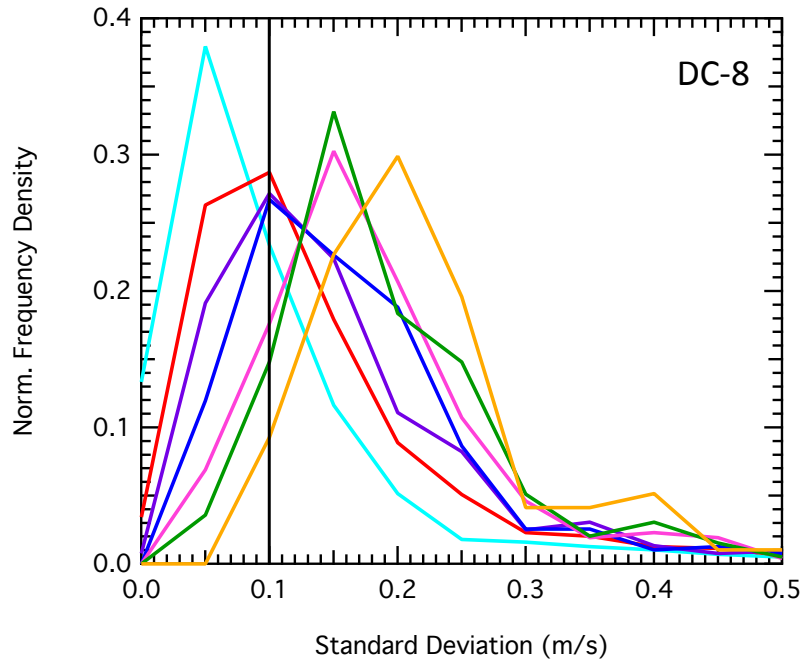
W

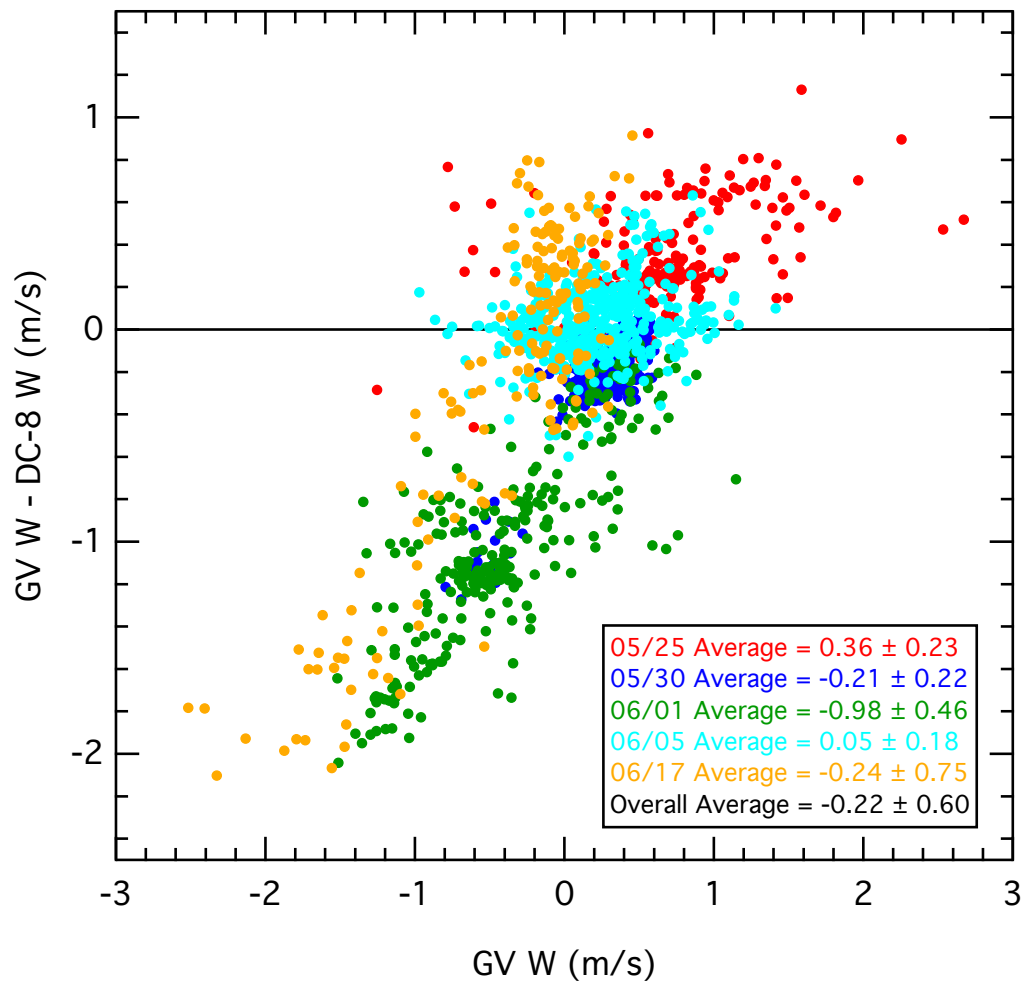


- 10s
- 20s
- 30s
- 40s
- 60s
- 80s
- 160s



W





IEIP Analysis Results: Absolute Precision

Flight	Platform	IEIP Precision (m/s)	Expected Variability (m/s)	Observed Variability (m/s)	Adjusted Precision (m/s)
05/25	DC-8	0.072	0.140	0.23	0.118
	GV	0.12			0.197
05/30	DC-8	0.07	0.122	0.22	0.126
	GV	0.1			0.180
06/01	DC-8	0.1	0.180	0.46	0.256
	GV	0.15			0.383
06/05	DC-8	0.1	0.189	0.18	0.1
	GV	0.16			0.16
06/17	DC-8	0.1	0.156	0.75	0.481
	GV	0.12			0.577

- Note graphs displayed have different axes.
- IEIP analyses are subjective.
- For more information on the Internal Estimate of Instrument Precision (IEIP) procedure refer to <http://www-air.larc.nasa.gov/TAbMEP.html>